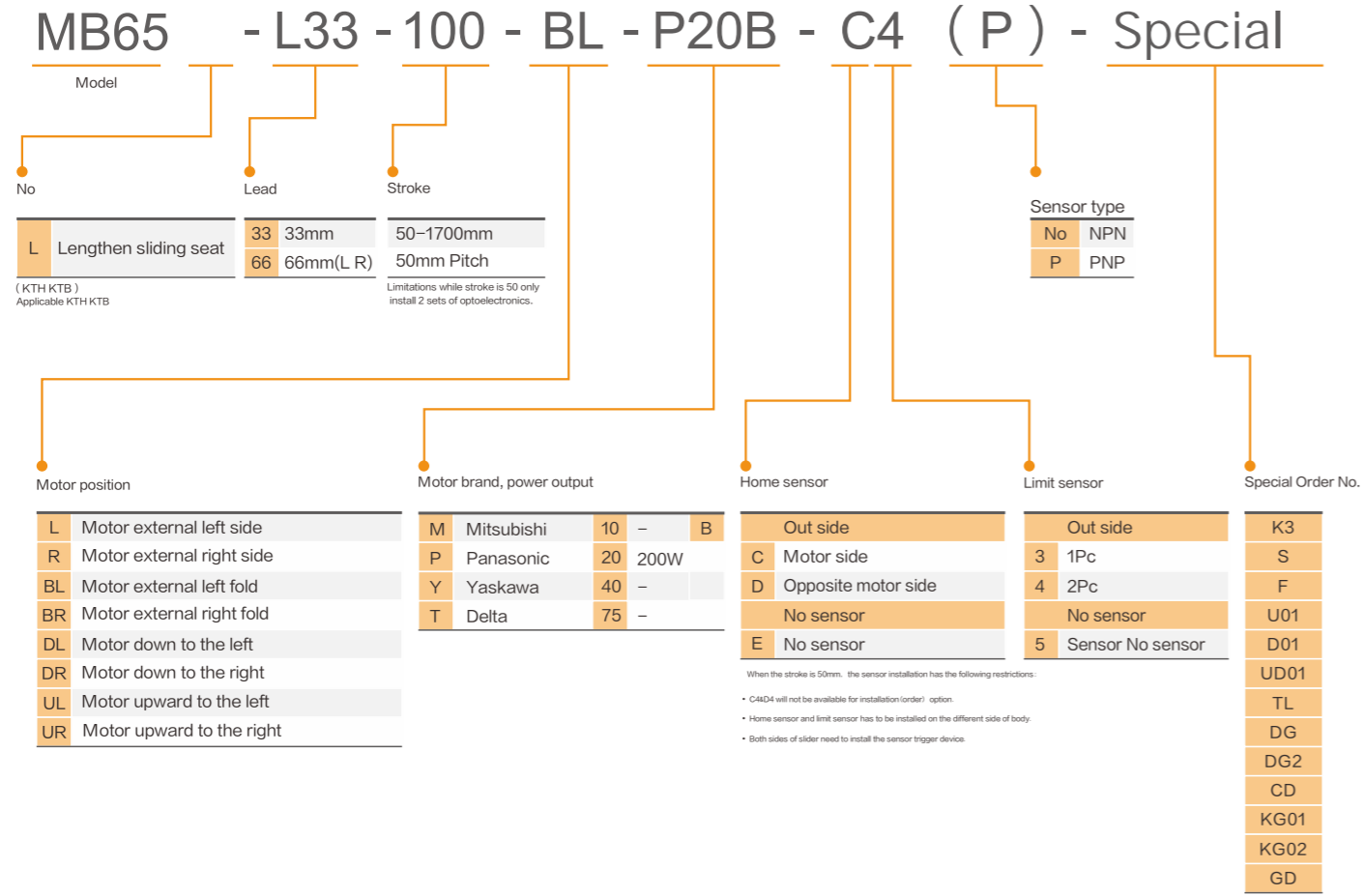


Timing belt module specification



Special Order No.
Refer to the table below

Name	Detailed information
K3	Module mounting with 3:1 reducer
S	Short sliding
F	Dust Cover
U01	Up installation hole customization
D01	Down installation hole customization
UD01	Both up and down installation hole customization
TL	Drag Chain
DG	Auxiliary Guide Rail on the Outside of module
DG2	Module Internal Replacement Guide Rail
CD	Module is driven shaft
KG01	Switch Mounting Plate, M2.5 Hole, Spacing 8
KG02	Long Switch Mounting Plate, Spacing 8
GD	Pull steel belt structure

MB Series

Belt Drive

CONTENTS

▶ European belt series

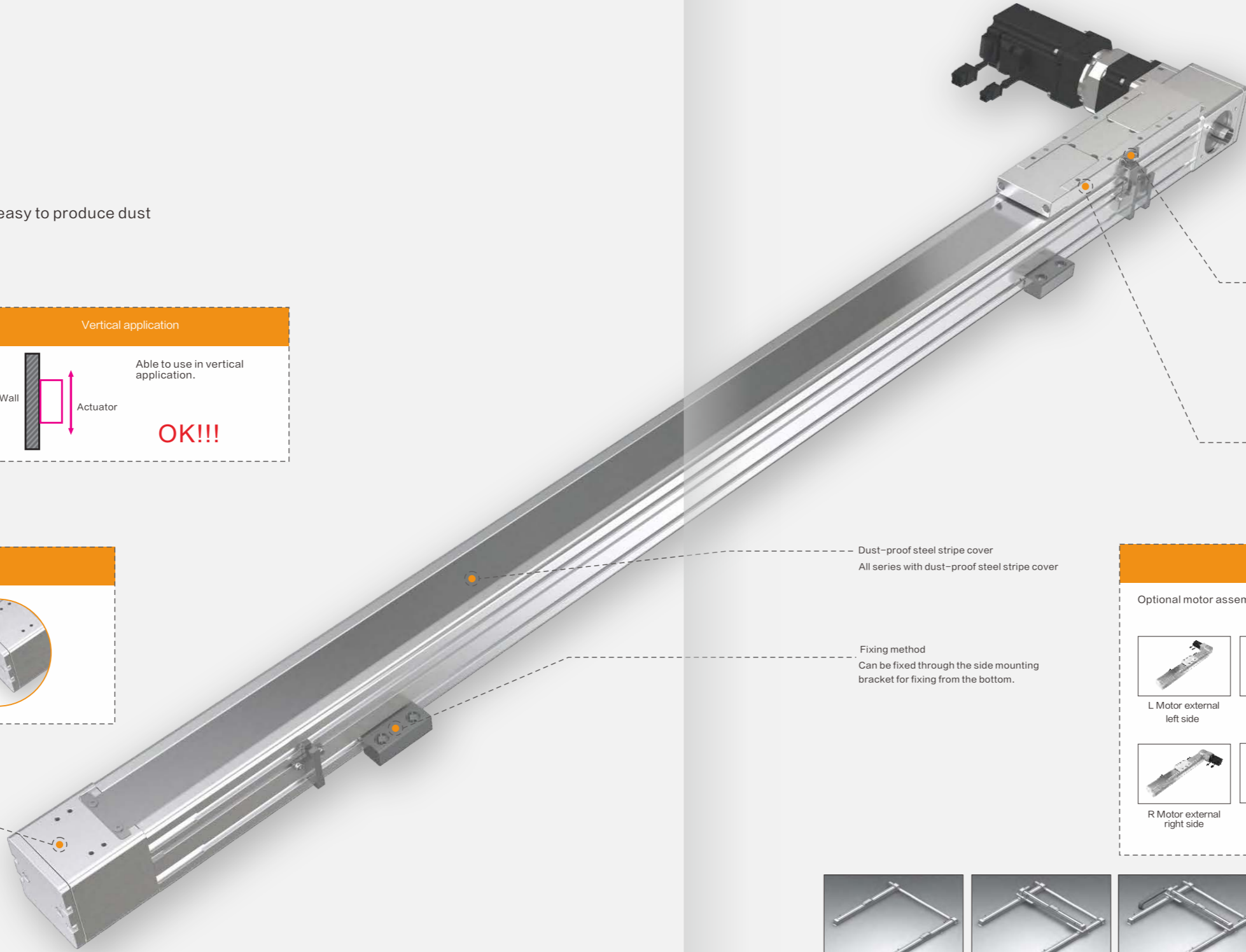
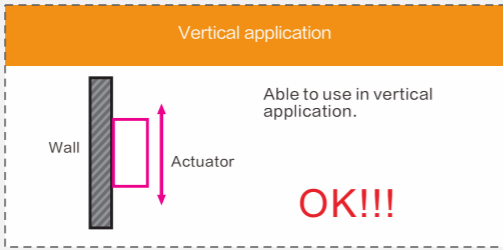
<p>MB65</p>  <p>Maximum stroke 5500mm Maximum load 60kg Body width 65mm</p>	<p>MB110</p>  <p>Maximum stroke 5500mm Maximum load 200kg Body width 110mm</p>
<p>MB80</p>  <p>Maximum stroke 5500mm Maximum load 100kg Body width 80mm</p>	

- General/ Inline/ Screw sample
- ATH
- RTH
- General/ Screw sample
- DG
- KTH
- General/ Electric cylinder sample
- DMB
- EMB
- General/ Inline/ Belt sample
- RTB
- General/ Belt sample
- DB
- KTB
- General/ European/ Belt sample
- MB
- Clean/ Inline/ Screw sample
- ACH
- RCH
- Clean/ Screw sample
- KCH
- Clean/ Inline/ Belt sample
- RCB
- Clean/ Belt sample
- KCB
- General/ KKT/ Screw sample
- KKT
- General/ Rack and pinion sample
- GR
- General/ Linear motor sample
- LM
- Reference

MB Euro gauge belt series

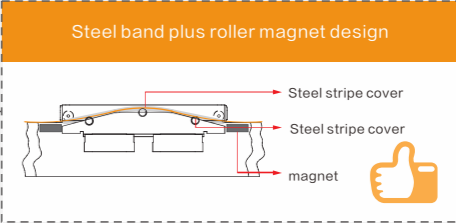
High Payload, High Speed

- Repeatability: + 0.1mm
- Design of steel roller support easy to produce dust
- Easy maintenance



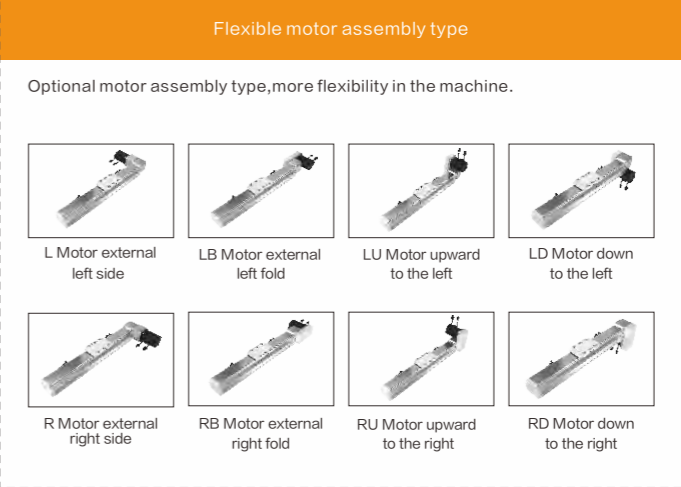
Easy maintenance

Greasing from outer nipples. No need to disassemble the unit.



Dust-proof steel stripe cover
All series with dust-proof steel stripe cover

Fixing method
Can be fixed through the side mounting bracket for fixing from the bottom.



Cantilever style | Double-axis synchronous gantry style

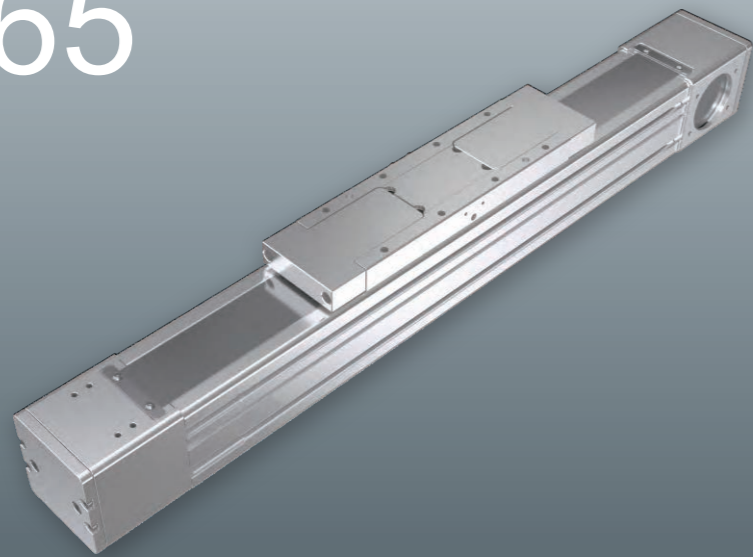
MB65 MB80 MB110

Belt Drive

European belt series

MB65

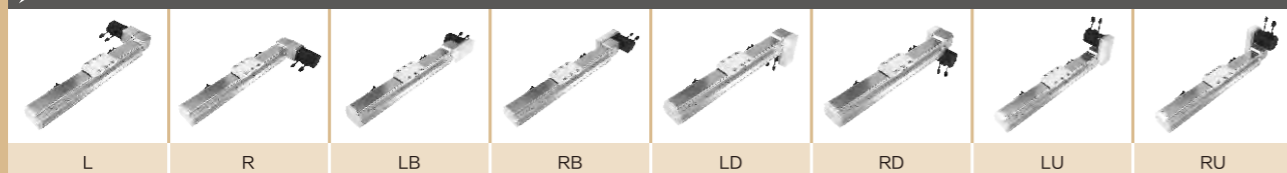
1-axis



This figure is for reference only, the shipping specifications are detailed in the dimension drawing.

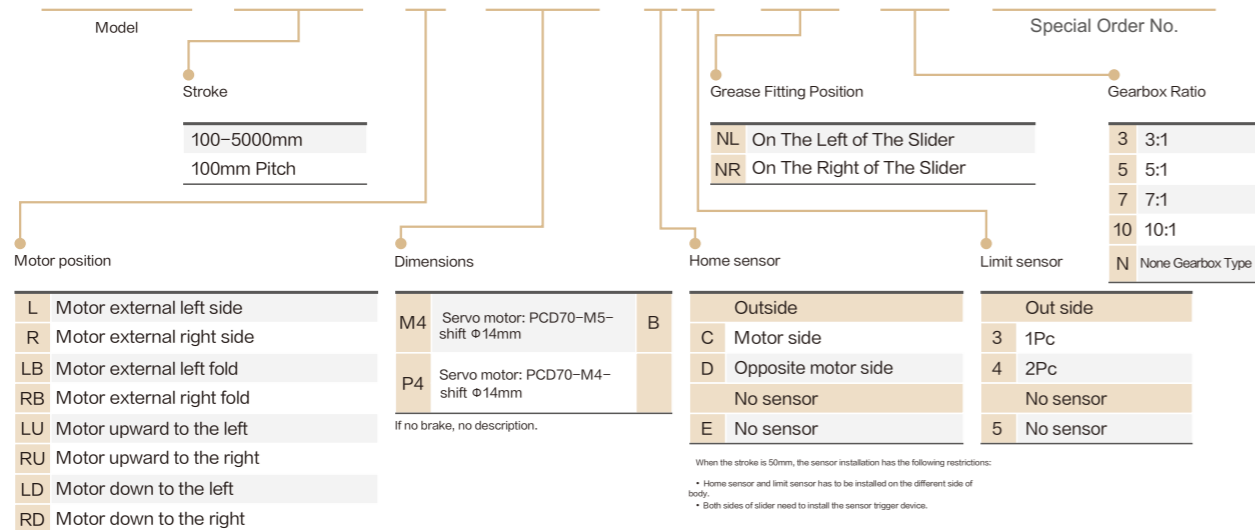
Maximum stroke **5500mm** Maximum speed **5000mm/s** Motor capacity **400W** Belt Width **30mm** Linear Guide **15X13-1PC**

Motor direction



Ordering method

MB65 - 5500 - L - P4B - C4 - NL - 10 - Special



When the stroke is 50mm, the sensor installation has the following restrictions:
 • Home sensor and limit sensor has to be installed on the different side of body.
 • Both sides of slider need to install the sensor trigger device.

Specification

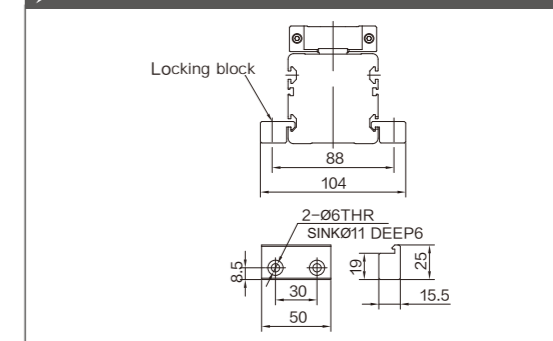
Spec	Repeatability	mm	± 0.1				
	Lead	mm	130				
	Reduction ratio		3:1	5:1	7:1	10:1	
	Maximum speed	mm/s	2166	1300	928	650	
	Maximum payload	Horizontal	kg	30	45	55	60
		Vertical	kg	9	15	16	17
Rated thrust	N	220					
Stroke pitch	mm	100-5500mm/100 pitch					
Parts	AC Servo motor output	W	400				
	Belt width	mm	25				
	High rigidity linear guide	mm	W15XH13				
	Home sensor	Outside	EE-SX672(NPN)				

- When using vertically, if the belt breaks, the load may fall. Please pay attention.
- When the sliding table is not equipped with a reducer, the lead is 130.
- Acceleration and deceleration value is set 0.4 second.

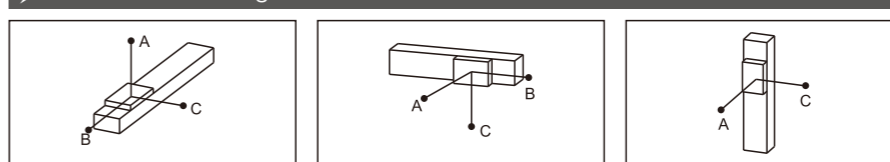
Numbers of fixing screws

M5 nuts Qty.(by stroke)			
Stroke	Quantity	Stroke	Quantity
100-500	4	2600-3000	14
600-1000	6	3100-3500	16
1100-1500	8	3600-4000	18
1600-2000	10	4100-4500	20
2100-2500	12	4600-5000	22

Installation Instructions & Dimensions



Allowable overhang



(Unit:mm)				(Unit:mm)				(Unit:mm)			
Horizontal Installation	A	B	C	Wall Installation	A	B	C	Vertical Installation	A	C	
3:1	10kg	950	250	42	250	950		3kg	900	900	
	20kg	420	105	18	19	110	450	6kg	450	450	
	30kg	250	55	10	10	60	260	9kg	300	300	
5:1	25kg	950	140	24	25	140	950	5kg	900	900	
	35kg	625	90	15	15	90	600	10kg	450	450	
	45kg	450	55	10	10	60	450	15kg	300	300	
7:1	28kg	1300	145	25	25	145	1300	6kg	900	900	
	40kg	850	90	15	15	90	850	12kg	450	450	
	55kg	550	50	10	10	60	550	16kg	300	300	
10:1	30kg	1850	145	25	25	140	1950	6kg	900	900	
	45kg	1250	90	15	15	90	1150	13kg	450	450	
	60kg	800	50	10	10	60	800	17kg	330	330	

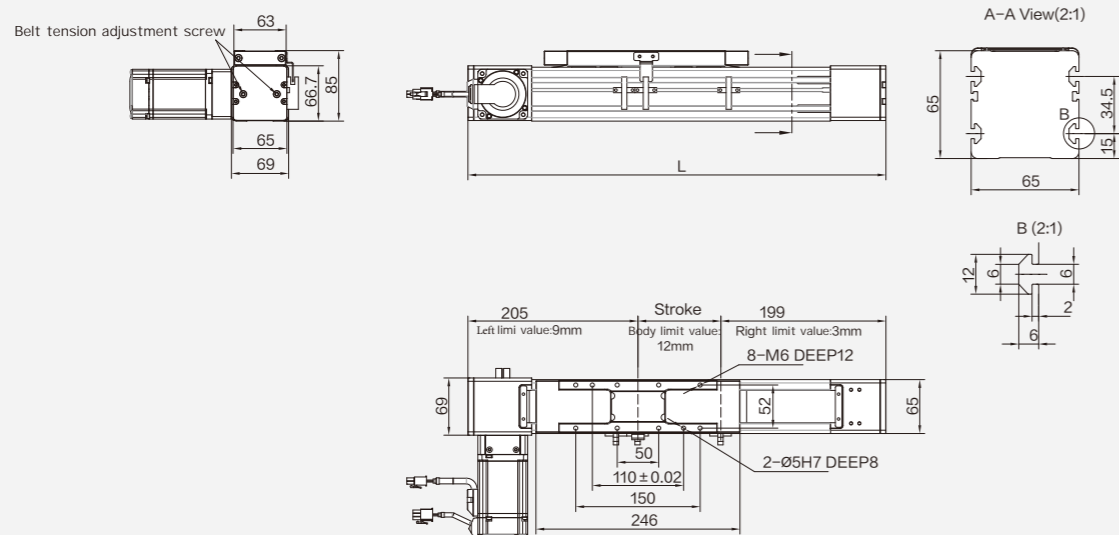
Static loading moment

	(Unit:N.m)
MY	337.9
MP	337.9
MR	58.6

- The torque value in the chart indicate the center of gravity.
- If the total length exceeds 1000mm, the steel strip may be deformed to avoid wall hanging.
- Operation life is 10,000km when the product is using under the specified conditions.

Motor external left side / Motor external right side

1-axis MB65



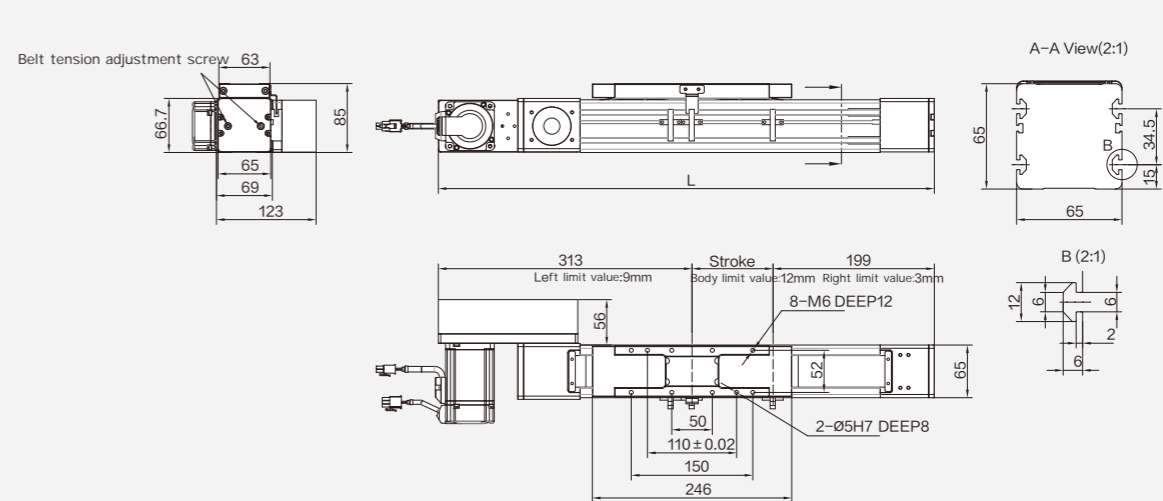
(Unit:mm)

Motor external left side	Stroke	1000	1100	1200	1300	1400	1500	1600	1700	1800	1900	2000	2100	2200	2300	2400	2500	2600	2700	2800	2900	3000	3100	3200
	L	1404	1504	1604	1704	1804	1904	2004	2104	2204	2304	2404	2504	2604	2704	2804	2904	3004	3104	3204	3304	3404	3504	3604
KG	9.4	9.9	10.4	10.9	11.4	11.9	12.4	12.9	13.4	13.9	14.4	14.9	15.4	15.9	16.4	16.9	17.4	17.9	18.4	18.9	19.4	19.9	20.4	

Motor external right side	Stroke	3300	3400	3500	3600	3700	3800	3900	4000	4100	4200	4300	4400	4500	4600	4700	4800	4900	5000	5100	5200	5300	5400	5500
	L	3704	3804	3904	4004	4104	4204	4304	4404	4504	4604	4704	4804	4904	5004	5104	5204	5304	5404	5504	5604	5704	5804	5904
KG	20.9	21.4	21.9	22.4	22.9	23.4	23.9	24.4	24.9	25.4	25.9	26.4	26.9	27.4	27.9	28.4	28.9	29.4	29.9	30.4	30.9	31.4	31.9	

Motor external left fold / Motor external right fold

1-axis MB65



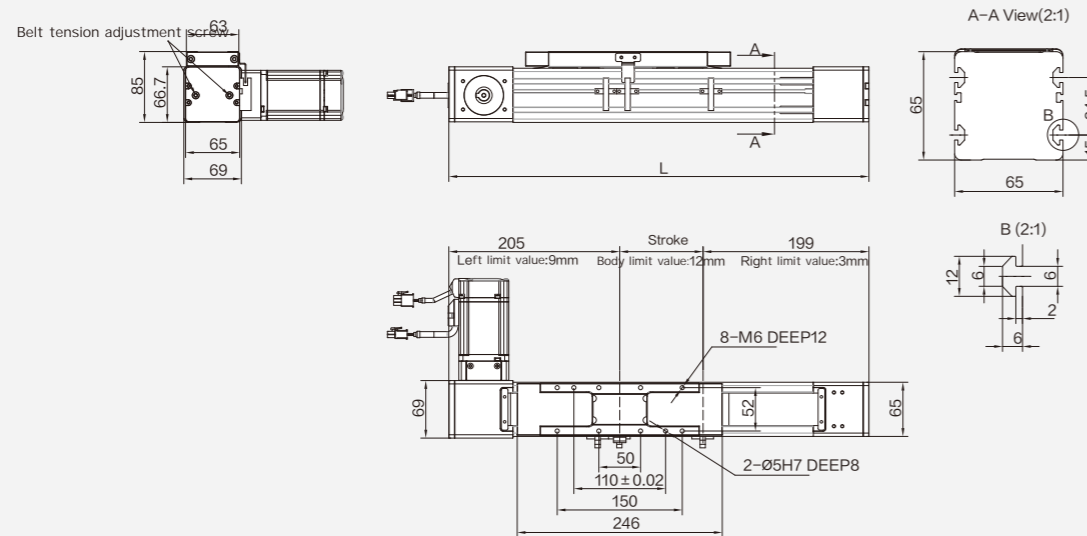
(Unit:mm)

Motor external left fold	Stroke	1000	1100	1200	1300	1400	1500	1600	1700	1800	1900	2000	2100	2200	2300	2400	2500	2600	2700	2800	2900	3000	3100	3200
	L	1512	1612	1712	1812	1912	2012	2112	2212	2312	2412	2512	2612	2712	2812	2912	3012	3112	3212	3312	3412	3512	3612	3712
KG	10.4	10.9	11.4	11.9	12.4	12.9	13.4	13.9	14.4	14.9	15.4	15.9	16.4	16.9	17.4	17.9	18.4	18.9	19.4	19.9	20.4	20.9	21.4	

Motor external right fold	Stroke	3300	3400	3500	3600	3700	3800	3900	4000	4100	4200	4300	4400	4500	4600	4700	4800	4900	5000	5100	5200	5300	5400	5500
	L	3812	3912	4012	4112	4212	4312	4412	4512	4612	4712	4812	4912	5012	5112	5212	5312	5412	5512	5612	5712	5812	5912	6012
KG	21.9	22.4	22.9	23.4	23.9	24.4	24.9	25.4	25.9	26.4	26.9	27.4	27.9	28.4	28.9	29.4	29.9	30.4	30.9	31.4	31.9	32.4	32.9	

MB65

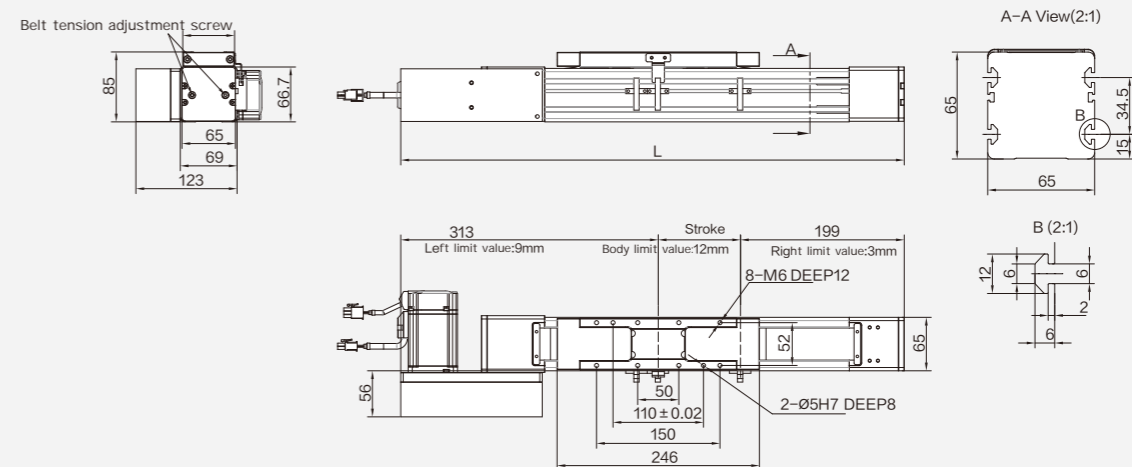
MB80 MB110 ACH4 ACH5 ACH8 ACH12 ACH15 RCH4 RCH5 RCH8 RCH12 RCH14 RCH17 KCH22 RCB5 RCB8 RCB12 RCB15 RCB14 RCB17 KCB22 KKT50 KKT60 KKT86 GR14 GR17 GR22 LM80 LM140 LM170 LM210



(Unit:mm)

Motor external right side	Stroke	1000	1100	1200	1300	1400	1500	1600	1700	1800	1900	2000	2100	2200	2300	2400	2500	2600	2700	2800	2900	3000	3100	3200
	L	1404	1504	1604	1704	1804	1904	2004	2104	2204	2304	2404	2504	2604	2704	2804	2904	3004	3104	3204	3304	3404	3504	3604
KG	9.4	9.9	10.4	10.9	11.4	11.9	12.4	12.9	13.4	13.9	14.4	14.9	15.4	15.9	16.4	16.9	17.4	17.9	18.4	18.9	19.4	19.9	20.4	

Motor external right side	Stroke	3300	3400	3500	3600	3700	3800	3900	4000	4100	4200	4300	4400	4500	4600	4700	4800	4900	5000	5100	5200	5300	5400	5500
	L	3704	3804	3904	4004	4104	4204	4304	4404	4504	4604	4704	4804	4904	5004	5104	5204	5304	5404	5504	5604	5704	5804	5904
KG	20.9	21.4	21.9	22.4	22.9	23.4	23.9	24.4	24.9	25.4	25.9	26.4	26.9	27.4	27.9	28.4	28.9	29.4	29.9	30.4	30.9	31.4	31.9	



(Unit:mm)

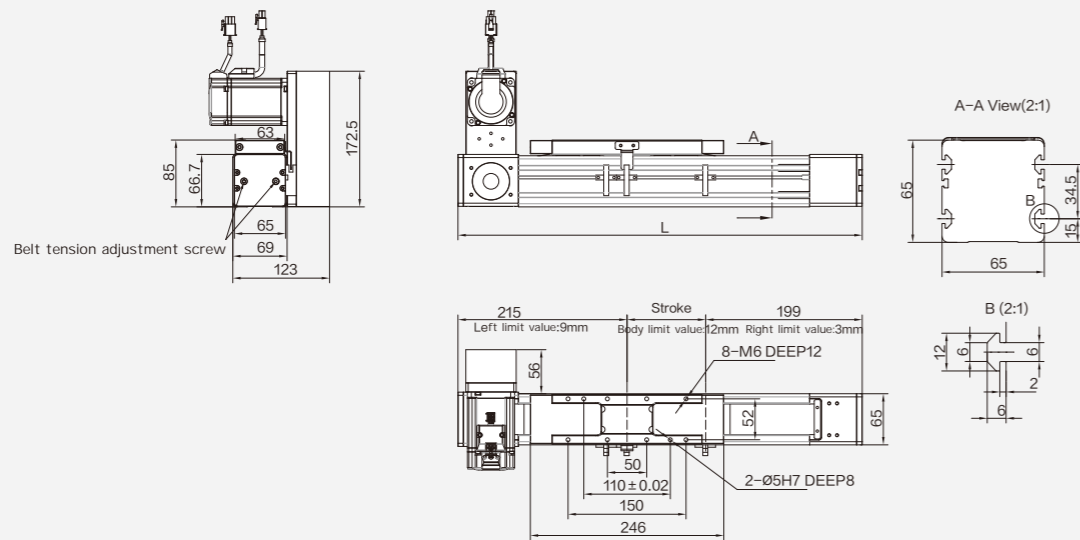
Motor external right fold	Stroke	1000	1100	1200	1300	1400	1500	1600	1700	1800	1900	2000	2100	2200	2300	2400	2500	2600	2700	2800	2900	3000	3100	3200
	L	1512	1612	1712	1812	1912	2012	2112	2212	2312	2412	2512	2612	2712	2812	2912	3012	3112	3212	3312	3412	3512	3612	3712
KG	10.4	10.9	11.4	11.9	12.4	12.9	13.4	13.9	14.4	14.9	15.4	15.9	16.4	16.9	17.4	17.9	18.4	18.9	19.4	19.9	20.4	20.9	21.4	

Motor external right fold	Stroke	3300	3400	3500	3600	3700	3800	3900	4000	4100	4200	4300	4400	4500	4600	4700	4800	4900	5000	5100	5200	5300	5400	5500
	L	3812	3912	4012	4112	4212	4312	4412	4512	4612	4712	4812	4912	5012	5112	5212	5312	5412	5512	5612	5712	5812	5912	6012
KG	21.9	22.4	22.9	23.4	23.9	24.4	24.9	25.4	25.9	26.4	26.9	27.4	27.9	28.4	28.9	29.4	29.9	30.4	30.9	31.4	31.9	32.4	32.9	

General/ Inline/ Screw sample
 ATH
 RTH
 General/ Screw sample
 DG
 KTH
 General/ Electric cylinder sample
 DMB
 EMB
 General/ Inline/ Belt sample
 RTB
 General/ Belt sample
 DB
 KTB
 General/ European/Belt sample
 MB
 Clean/ Inline/ Screw sample
 ACH
 RCH
 Clean/ Screw sample
 KCH
 Clean/ Inline/ Belt sample
 RCB
 Clean/ Belt sample
 KCB
 General/ KKT/ Screw sample
 KKT
 General/ Rack and pinion sample
 GR
 General/ Linear motor sample
 LM
 Reference

Motor upward to the left / Motor upward to the right

1-axis MB65



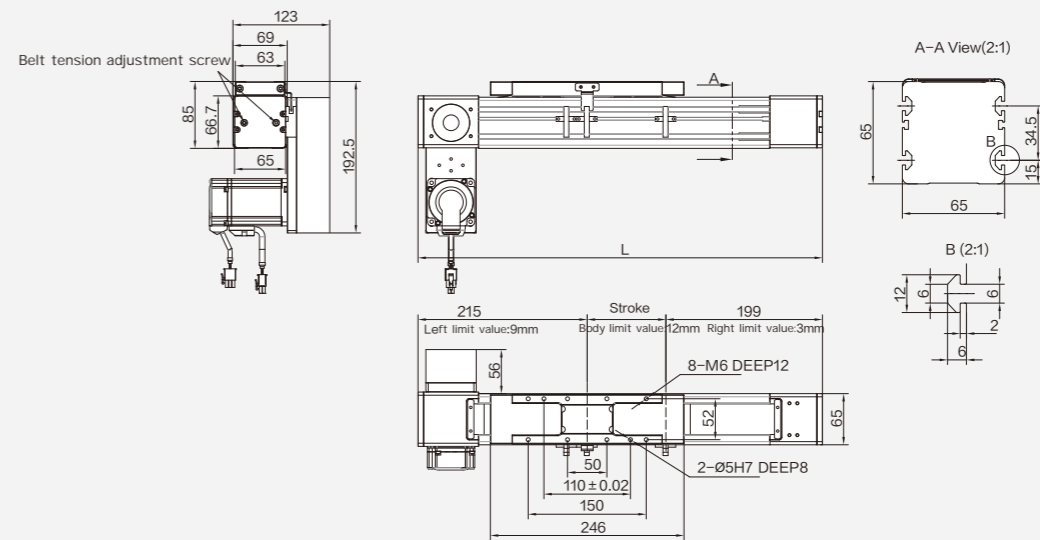
(Unit:mm)

Motor upward to the left	Stroke	1000	1100	1200	1300	1400	1500	1600	1700	1800	1900	2000	2100	2200	2300	2400	2500	2600	2700	2800	2900	3000	3100	3200
	L	1414	1514	1614	1714	1814	1914	2014	2114	2214	2314	2414	2514	2614	2714	2814	2914	3014	3114	3214	3314	3414	3514	3614
KG	10.4	10.9	11.4	11.9	12.4	12.9	13.4	13.9	14.4	14.9	15.4	15.9	16.4	16.9	17.4	17.9	18.4	18.9	19.4	19.9	20.4	20.9	21.4	

Motor upward to the right	Stroke	3300	3400	3500	3600	3700	3800	3900	4000	4100	4200	4300	4400	4500	4600	4700	4800	4900	5000	5100	5200	5300	5400	5500
	L	3714	3814	3914	4014	4114	4214	4314	4414	4514	4614	4714	4814	4914	5014	5114	5214	5314	5414	5514	5614	5714	5814	5914
KG	21.9	22.4	22.9	23.4	23.9	24.4	24.9	25.4	25.9	26.4	26.9	27.4	27.9	28.4	28.9	29.4	29.9	30.4	30.9	31.4	31.9	32.4	32.9	

Motor down to the left / Motor down to the right

1-axis MB65



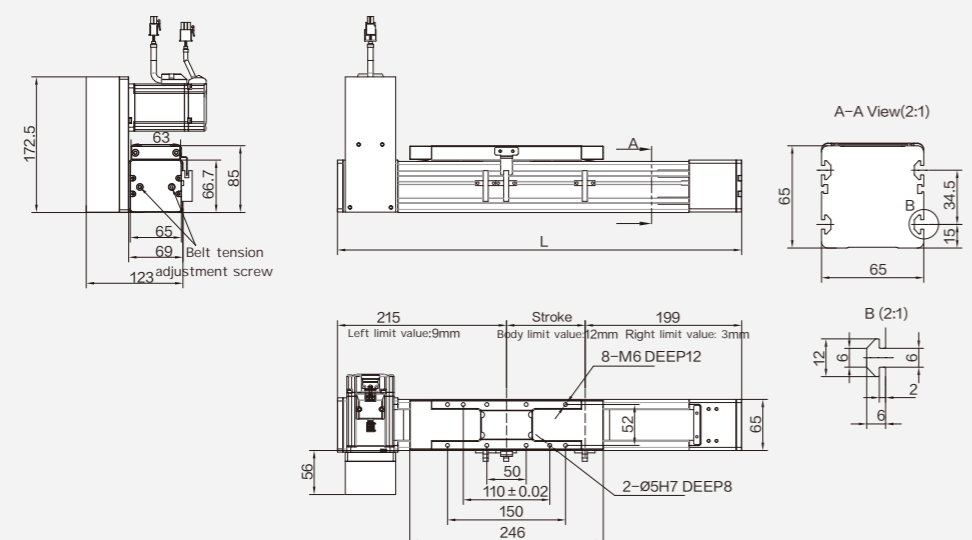
(Unit:mm)

Motor down to the left	Stroke	1000	1100	1200	1300	1400	1500	1600	1700	1800	1900	2000	2100	2200	2300	2400	2500	2600	2700	2800	2900	3000	3100	3200
	L	1414	1514	1614	1714	1814	1914	2014	2114	2214	2314	2414	2514	2614	2714	2814	2914	3014	3114	3214	3314	3414	3514	3614
KG	10.4	10.9	11.4	11.9	12.4	12.9	13.4	13.9	14.4	14.9	15.4	15.9	16.4	16.9	17.4	17.9	18.4	18.9	19.4	19.9	20.4	20.9	21.4	

Motor down to the right	Stroke	3300	3400	3500	3600	3700	3800	3900	4000	4100	4200	4300	4400	4500	4600	4700	4800	4900	5000	5100	5200	5300	5400	5500
	L	3714	3814	3914	4014	4114	4214	4314	4414	4514	4614	4714	4814	4914	5014	5114	5214	5314	5414	5514	5614	5714	5814	5914
KG	21.9	22.4	22.9	23.4	23.9	24.4	24.9	25.4	25.9	26.4	26.9	27.4	27.9	28.4	28.9	29.4	29.9	30.4	30.9	31.4	31.9	32.4	32.9	

MB65

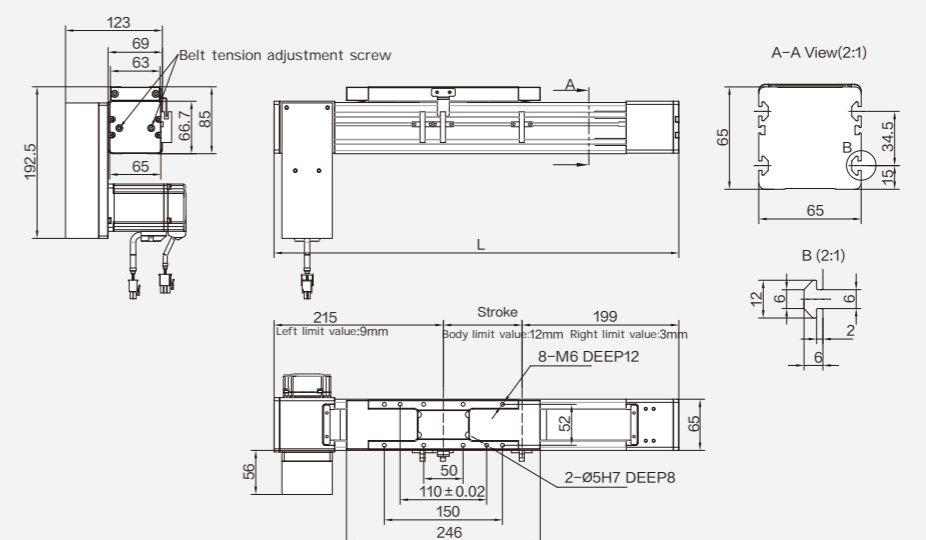
MB80 MB110 ACH4 ACH5 ACH8 ACH12 ACH15 RCH4 RCH5 RCH8 RCH12 RCH14 RCH17 RCH22 RCB5 RCB8 RCB12 RCB15 KCB14 KCB17 KCB22 KKT50 KKT60 KKT86 GR14 GR17 GR22 LM80 LM140 LM170 LM210



(Unit:mm)

Motor upward to the right	Stroke	1000	1100	1200	1300	1400	1500	1600	1700	1800	1900	2000	2100	2200	2300	2400	2500	2600	2700	2800	2900	3000	3100	3200
	L	1414	1514	1614	1714	1814	1914	2014	2114	2214	2314	2414	2514	2614	2714	2814	2914	3014	3114	3214	3314	3414	3514	3614
KG	10.4	10.9	11.4	11.9	12.4	12.9	13.4	13.9	14.4	14.9	15.4	15.9	16.4	16.9	17.4	17.9	18.4	18.9	19.4	19.9	20.4	20.9	21.4	

Motor upward to the right	Stroke	3300	3400	3500	3600	3700	3800	3900	4000	4100	4200	4300	4400	4500	4600	4700	4800	4900	5000	5100	5200	5300	5400	5500
	L	3714	3814	3914	4014	4114	4214	4314	4414	4514	4614	4714	4814	4914	5014	5114	5214	5314	5414	5514	5614	5714	5814	5914
KG	21.9	22.4	22.9	23.4	23.9	24.4	24.9	25.4	25.9	26.4	26.9	27.4	27.9	28.4	28.9	29.4	29.9	30.4	30.9	31.4	31.9	32.4	32.9	



(Unit:mm)

Motor down to the right	Stroke	1000	1100	1200	1300	1400	1500	1600	1700	1800	1900	2000	2100	2200	2300	2400	2500	2600	2700	2800	2900	3000	3100	3200
	L	1414	1514	1614	1714	1814	1914	2014	2114	2214	2314	2414	2514	2614	2714	2814	2914	3014	3114	3214	3314	3414	3514	3614
KG	10.4	10.9	11.4	11.9	12.4	12.9	13.4	13.9	14.4	14.9	15.4	15.9	16.4	16.9	17.4	17.9	18.4	18.9	19.4	19.9	20.4	20.9	21.4	

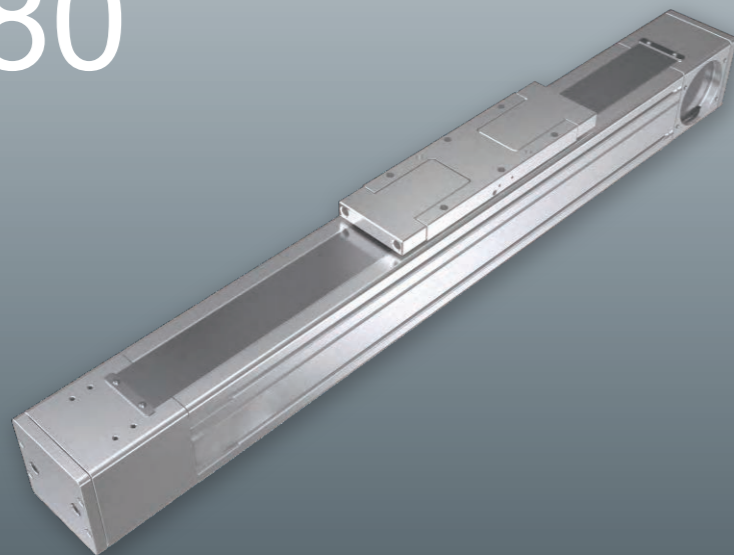
Motor down to the right	Stroke	3300	3400	3500	3600	3700	3800	3900	4000	4100	4200	4300	4400	4500	4600	4700	4800	4900	5000	5100	5200	5300	5400	5500
	L	3714	3814	3914	4014	4114	4214	4314	4414	4514	4614	4714	4814	4914	5014	5114	5214	5314	5414	5514	5614	5714	5814	5914
KG	21.9	22.4	22.9	23.4	23.9	24.4	24.9	25.4	25.9	26.4	26.9	27.4	27.9	28.4	28.9	29.4	29.9	30.4	30.9	31.4	31.9	32.4	32.9	

General/ In-line/ Screw sample
 ATH RTH
 General/ Screw sample
 DG KTH
 General/ Electric cylinder sample
 DMB EMB
 General/ In-line/ Belt sample
 RTB
 General/ Belt sample
 DB KTB
 General/ European/ Belt sample
 MB
 Clean/ In-line/ Screw sample
 ACH RCH
 Clean/ Screw sample
 KCH
 Clean/ In-line/ Belt sample
 RCB
 Clean/ Belt sample
 KCB
 General/ KKT/ Screw sample
 KKT
 General/ Rack and pinion sample
 GR
 General/ Linear motor sample
 LM
 Reference

European belt series

MB80

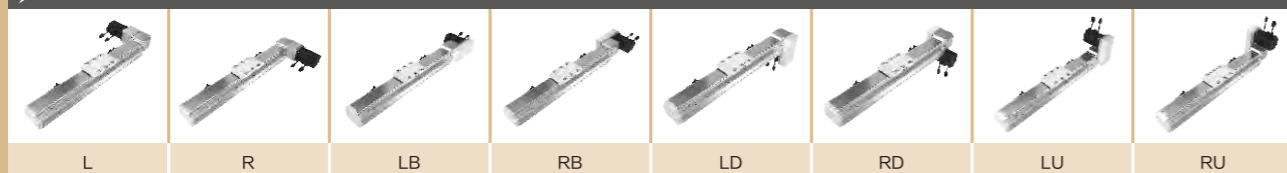
1-axis



This figure is for reference only, the shipping specifications are detailed in the dimension drawing.

Maximum stroke **5500mm** Maximum speed **5000mm/s** Motor capacity **750W** Belt Width **35mm** Linear Guide **20X16-1PC**

Motor direction



Ordering method

MB80 - 5500 - L - P4B - C4 - NL - 10 - Special

Special Order No.

Model	Stroke	Grease Fitting Position	Gearbox Ratio
	100-5500mm 100mm Pitch	NL On The Left of The Slider NR On The Right of The Slider	5 5:1 7 7:1 10 10:1 N None Gearbox Type
Motor position	Dimensions	Home sensor	Limit sensor
L Motor external left side R Motor external right side LB Motor external left fold RB Motor external right fold LU Motor upward to the left RU Motor upward to the right LD Motor down to the left RD Motor down to the right	M4 Servo motor: PCD70-M5-shift ϕ 14mm P4 Servo motor: PCD70-M4-shift ϕ 14mm M7 Servo motor: PCD90-M6-shift ϕ 19mm P7 Servo motor: PCD90-M5-shift ϕ 19mm	Out side C Motor side D Opposite motor side No sensor E No sensor	Out side 3 1Pc 4 2Pc No sensor 5 No sensor

When the stroke is 50mm, the sensor installation has the following restrictions

- Home sensor and limit sensor has to be installed on the different side of body
- Both sides of slider need to install the sensor trigger device.

If no brake, no description.

Specification

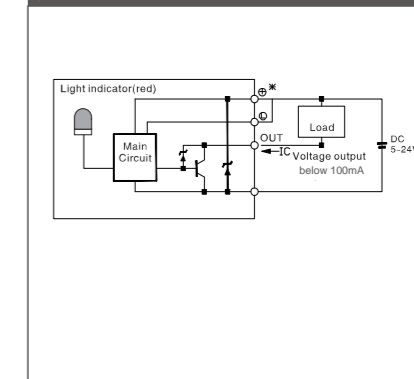
Spec	Repeatability	mm	± 0.1			
	Lead	mm	200			
	Reduction ratio		5:1	7:1	10:1	
	Maximum speed	mm/s	2000	1428	1000	
	Maximum payload	Horizontal	kg	40	60	100
		Vertical	kg	14	21	24
Rated thrust	N	340				
Stroke pitch	mm	100-5500mm/100 Pitch				
Parts	AC Servo motor output	W	750/400			
	Belt width	mm	35			
	High rigidity linear guide	mm	W20XH16			
	Home sensor	Outside	EE-SX672(NPN)			

When using vertically, if the belt breaks, the load may fall. Please pay attention.

• When the sliding table is not equipped with a reducer, the lead is 200.

• Acceleration and deceleration value is set 0.4 second.

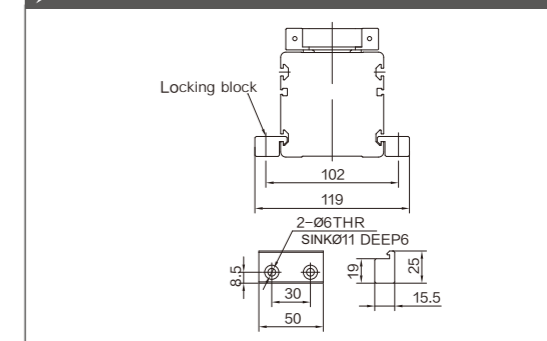
Sensor layout



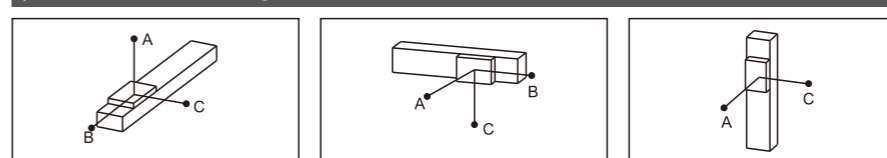
Numbers of fixing screws

M5 nuts Qty.(by stroke)			
Stroke	Quantity	Stroke	Quantity
100-500	4	2600-3000	14
600-1000	6	3100-3500	16
1100-1500	8	3600-4000	18
1600-2000	10	4100-4500	20
2100-2500	12	4600-5000	22

Installation Instructions & Dimensions



Allowable overhang



(Unit:mm)				(Unit:mm)				(Unit:mm)			
Horizontal Installation	A	B	C	Wall Installation	A	B	C	Vertical Installation	A	C	
5:1	20kg	900	280	40	280	900	5:1	5kg	1250	1250	5:1
	30kg	550	160	22	160	600		10kg	650	650	
	40kg	400	110	15	15	400		14kg	450	450	
7:1	40kg	750	160	22	160	750	7:1	15kg	600	600	7:1
	50kg	575	115	16	15	575		18kg	480	480	
	60kg	420	85	12	12	450		21kg	400	400	
10:1	60kg	900	140	20	20	140	10:1	18kg	550	550	10:1
	80kg	700	105	15	15	105		20kg	450	450	
	100kg	550	75	10	10	75		24kg	350	350	

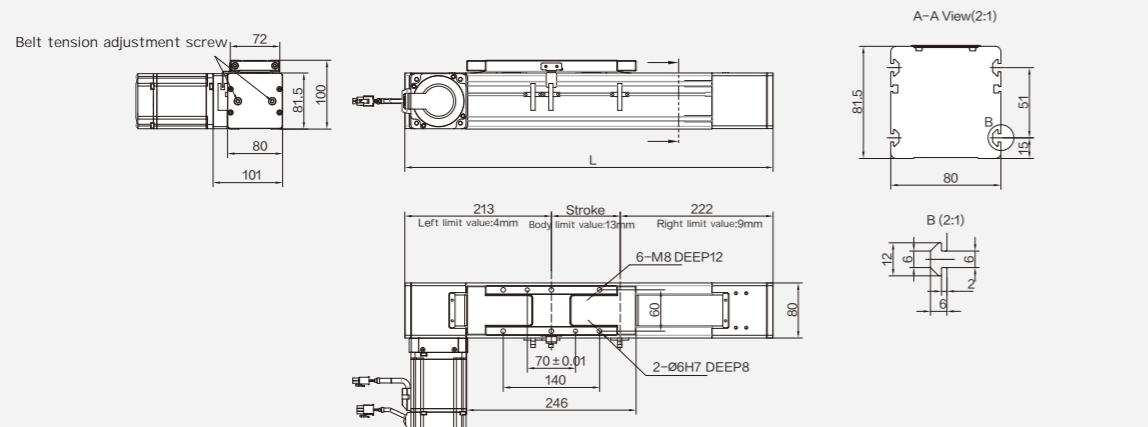
• The torque value in the chart indicate the center of gravity.

• If the total length exceeds 1000mm, the steel strip may be deformed to avoid wall hanging.

• Operation life is 10,000km when the product is using under the specified conditions.

Static loading moment

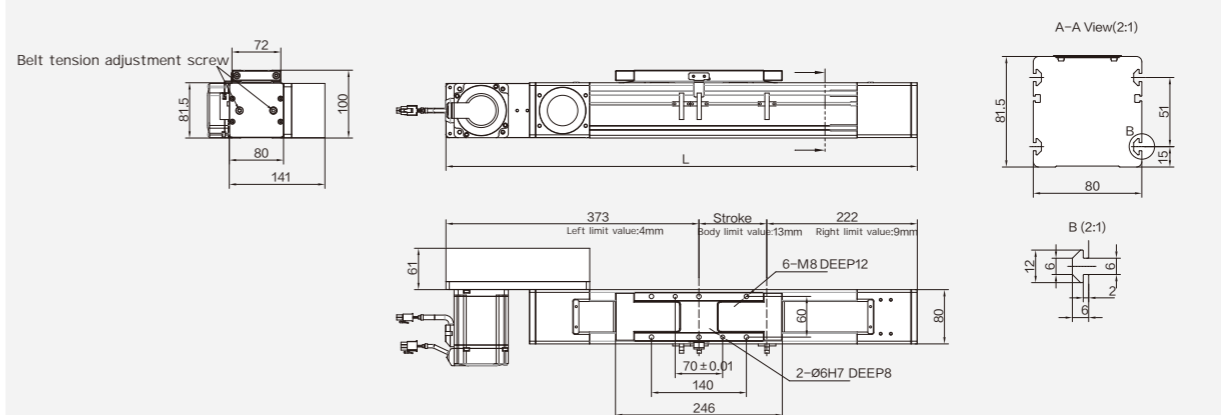
	(Unit:N.m)
MY	867.7
MP	867.7
MR	122.8



(Unit:mm)

Motor external left side	Stroke	1000	1100	1200	1300	1400	1500	1600	1700	1800	1900	2000	2100	2200	2300	2400	2500	2600	2700	2800	2900	3000	3100	3200
	L	1435	1535	1635	1735	1835	1935	2035	2135	2235	2335	2435	2535	2635	2735	2835	2935	3035	3135	3235	3335	3435	3535	3635
KG	10.7	11	11.3	11.6	11.9	12.2	12.5	12.8	13.1	13.4	13.7	14	14.3	14.6	14.9	15.2	15.5	15.8	16.1	16.4	16.7	17	17.3	

Motor external right side	Stroke	3300	3400	3500	3600	3700	3800	3900	4000	4100	4200	4300	4400	4500	4600	4700	4800	4900	5000	5100	5200	5300	5400	5500
	L	3735	3835	3935	4035	4135	4235	4335	4435	4535	4635	4735	4835	4935	5035	5135	5235	5335	5435	5535	5635	5735	5835	5935
KG	17.5	17.8	18.1	18.4	18.7	19	19.3	19.6	19.9	20.2	20.5	20.8	21.1	21.4	21.7	22	22.3	22.6	22.9	23.2	23.5	23.8	24.1	



(Unit:mm)

Motor external left fold	Stroke	1000	1100	1200	1300	1400	1500	1600	1700	1800	1900	2000	2100	2200	2300	2400	2500	2600	2700	2800	2900	3000	3100	3200
	L	1595	1695	1795	1895	1995	2095	2195	2295	2395	2495	2595	2695	2795	2895	2995	3095	3195	3295	3395	3495	3595	3695	3795
KG	14.3	14.8	15.3	15.8	16.3	16.8	17.3	17.8	18.3	18.8	19.3	19.8	20.3	20.8	21.3	21.8	22.3	22.8	23.3	23.8	24.3	24.8	25.3	

Motor external right fold	Stroke	3300	3400	3500	3600	3700	3800	3900	4000	4100	4200	4300	4400	4500	4600	4700	4800	4900	5000	5100	5200	5300	5400	5500
	L	3895	3995	4095	4195	4295	4395	4495	4595	4695	4795	4895	4995	5095	5195	5295	5395	5495	5595	5695	5795	5895	5995	6095
KG	25.8	26.3	26.8	27.3	27.8	28.3	28.8	29.3	29.8	30.3	30.8	31.3	31.8	32.3	32.8	33.3	33.8	34.3	34.8	35.3	35.8	36.3	36.8	

ATH3
ATH4
ATH5
ATH8
ATH12
ATH15
RTH4
RTH5
RTH8
RTH12
DG60
DG100
DG135
KTH13
KTH14
KTH17
KTH22
KTH27
DMB5
DMB10
DMB20
DMB30
DMB40
EMB5
EMB10
EMB20
RTB5
RTB8
RTB12
RTB15
DB100
DB135
KTB14M
KTB17M
KTB22M
MB65

MB80

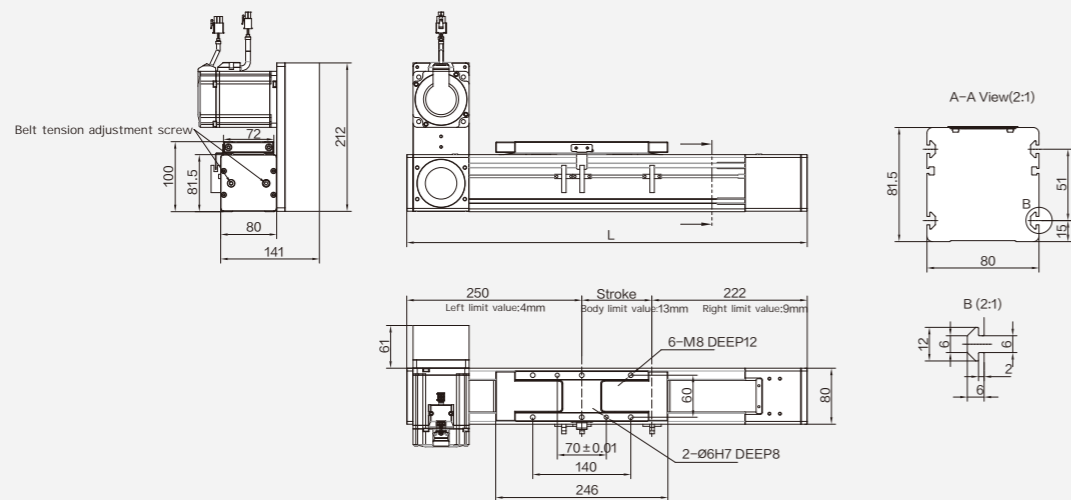
MB110
ACH4
ACH5
ACH8
ACH12
ACH15
RCH4
RCH5
RCH8
RCH12
KCH14
KCH17
KCH22
RCB5
RCB8
RCB12
RCB15
KCB14
KCB17
KCB22
KKT50
KKT60
KKT86
GR14
GR17
GR22
LM80
LM140
LM170
LM210

R
R

General/ In-line/ Screw sample
ATH
RTH
DG
KTH
Electric cylinder sample
DMB
EY
General/ In-line/ Belt sample
RTB
General/ Belt sample
DB
KTB
European/Belt sample
MB
無塵/内嵌/ 螺絲仕様
Clean/ In-line/ Screw sample
ACH
RCH
無塵/ 皮帶仕様
Clean/ Screw sample
KCH
無塵/内嵌/ 皮帶仕様
Clean/ In-line/ Belt sample
RCB
無塵/ 皮帶仕様
Clean/ Belt sample
KCB
一般/ KKT/ 螺絲仕様
General/ KKT/ Screw sample
KKT
General/ Rack and pinion sample
GR
General/ Linear motor sample
LM
Reference

Motor upward to the left / Motor upward to the right

1-axis MB80

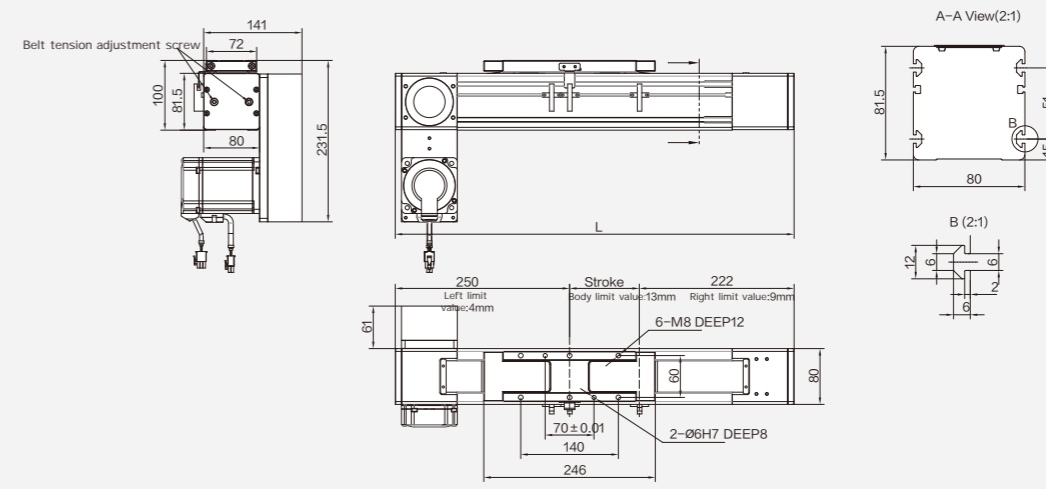


(Unit:mm)

LU	Motor upward to the left	Stroke	1000	1100	1200	1300	1400	1500	1600	1700	1800	1900	2000	2100	2200	2300	2400	2500	2600	2700	2800	2900	3000	3100	3200
		L	1472	1572	1672	1772	1872	1972	2072	2172	2272	2372	2472	2572	2672	2772	2872	2972	3072	3172	3272	3372	3472	3572	3672
		KG	14.3	14.8	15.3	15.8	16.3	16.8	17.3	17.8	18.3	18.8	19.3	19.8	20.3	20.8	21.3	21.8	22.3	22.8	23.3	23.8	24.3	24.8	25.3
LU	Motor upward to the right	Stroke	3300	3400	3500	3600	3700	3800	3900	4000	4100	4200	4300	4400	4500	4600	4700	4800	4900	5000	5100	5200	5300	5400	5500
		L	3772	3872	3972	4072	4172	4272	4372	4472	4572	4672	4772	4872	4972	5072	5172	5272	5372	5472	5572	5672	5772	5872	5972
		KG	25.8	26.3	26.8	27.3	27.8	28.3	28.8	29.3	29.8	30.3	30.8	31.3	31.8	32.3	32.8	33.3	33.8	34.3	34.8	35.3	35.8	36.3	36.8

Motor down to the left / Motor down to the right

1-axis MB80



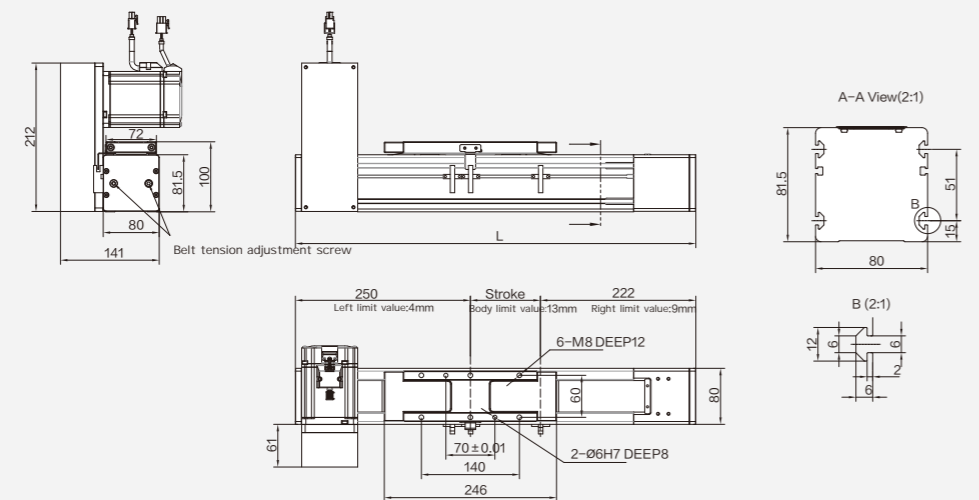
(Unit:mm)

LD	Motor down to the left	Stroke	1000	1100	1200	1300	1400	1500	1600	1700	1800	1900	2000	2100	2200	2300	2400	2500	2600	2700	2800	2900	3000	3100	3200
		L	1472	1572	1672	1772	1872	1972	2072	2172	2272	2372	2472	2572	2672	2772	2872	2972	3072	3172	3272	3372	3472	3572	3672
		KG	14.3	14.8	15.3	15.8	16.3	16.8	17.3	17.8	18.3	18.8	19.3	19.8	20.3	20.8	21.3	21.8	22.3	22.8	23.3	23.8	24.3	24.8	25.3
LD	Motor down to the right	Stroke	3300	3400	3500	3600	3700	3800	3900	4000	4100	4200	4300	4400	4500	4600	4700	4800	4900	5000	5100	5200	5300	5400	5500
		L	3772	3872	3972	4072	4172	4272	4372	4472	4572	4672	4772	4872	4972	5072	5172	5272	5372	5472	5572	5672	5772	5872	5972
		KG	25.8	26.3	26.8	27.3	27.8	28.3	28.8	29.3	29.8	30.3	30.8	31.3	31.8	32.3	32.8	33.3	33.8	34.3	34.8	35.3	35.8	36.3	36.8

ATH3
ATH4
ATH5
ATH8
ATH12
ATH15
RTH4
RTH5
RTH8
RTH12
DG60
DG100
DG135
KTH13
KTH14
KTH17
KTH22
KTH27
DMB5
DMB10
DMB20
DMB30
DMB40
EMB5
EMB10
EMB20
RTB5
RTB8
RTB12
RTB15
DB100
DB135
KTB14M
KTB17M
KTB22M
MB65

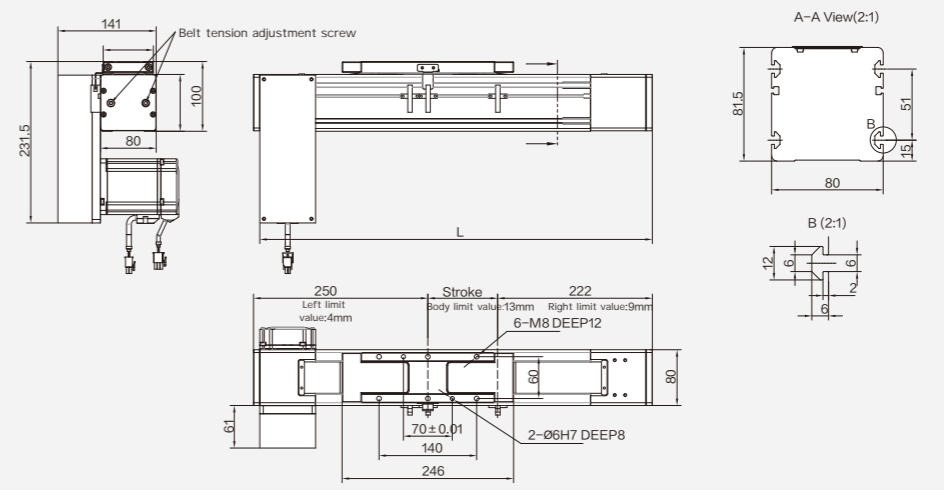
MB80

MB110
ACH4
ACH5
ACH8
ACH12
ACH15
RCH4
RCH5
RCH8
RCH12
KCH14
KCH17
KCH22
RCB5
RCB8
RCB12
RCB15
KCB14
KCB17
KCB22
KKT50
KKT60
KKT86
GR14
GR17
GR22
LM80
LM140
LM170
LM210



(Unit:mm)

RU	Motor upward to the right	Stroke	1000	1100	1200	1300	1400	1500	1600	1700	1800	1900	2000	2100	2200	2300	2400	2500	2600	2700	2800	2900	3000	3100	3200
		L	1472	1572	1672	1772	1872	1972	2072	2172	2272	2372	2472	2572	2672	2772	2872	2972	3072	3172	3272	3372	3472	3572	3672
		KG	14.3	14.8	15.3	15.8	16.3	16.8	17.3	17.8	18.3	18.8	19.3	19.8	20.3	20.8	21.3	21.8	22.3	22.8	23.3	23.8	24.3	24.8	25.3
RU	Motor upward to the left	Stroke	3300	3400	3500	3600	3700	3800	3900	4000	4100	4200	4300	4400	4500	4600	4700	4800	4900	5000	5100	5200	5300	5400	5500
		L	3772	3872	3972	4072	4172	4272	4372	4472	4572	4672	4772	4872	4972	5072	5172	5272	5372	5472	5572	5672	5772	5872	5972
		KG	25.8	26.3	26.8	27.3	27.8	28.3	28.8	29.3	29.8	30.3	30.8	31.3	31.8	32.3	32.8	33.3	33.8	34.3	34.8	35.3	35.8	36.3	36.8



(Unit:mm)

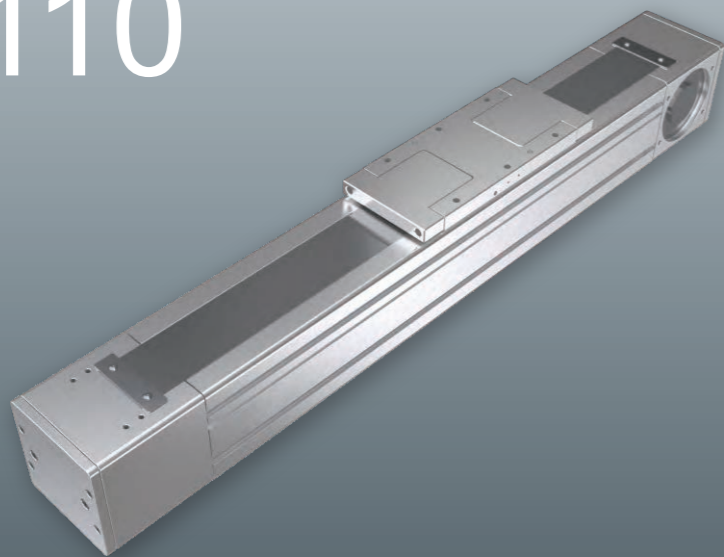
RD	Motor down to the right	Stroke	1000	1100	1200	1300	1400	1500	1600	1700	1800	1900	2000	2100	2200	2300	2400	2500	2600	2700	2800	2900	3000	3100	3200
		L	1472	1572	1672	1772	1872	1972	2072	2172	2272	2372	2472	2572	2672	2772	2872	2972	3072	3172	3272	3372	3472	3572	3672
		KG	14.3	14.8	15.3	15.8	16.3	16.8	17.3	17.8	18.3	18.8	19.3	19.8	20.3	20.8	21.3	21.8	22.3	22.8	23.3	23.8	24.3	24.8	25.3
RD	Motor down to the left	Stroke	3300	3400	3500	3600	3700	3800	3900	4000	4100	4200	4300	4400	4500	4600	4700	4800	4900	5000	5100	5200	5300	5400	5500
		L	3772	3872	3972	4072	4172	4272	4372	4472	4572	4672	4772	4872	4972	5072	5172	5272	5372	5472	5572	5672	5772	5872	5972
		KG	25.8	26.3	26.8	27.3	27.8	28.3	28.8	29.3	29.8	30.3	30.8	31.3	31.8	32.3	32.8	33.3	33.8	34.3	34.8	35.3	35.8	36.3	36.8

General/
In-line/
Screw sample
ATH
RTH
General/
Screw sample
DG
KTH
General/
Electric cylinder
sample
DMB
EMB
General/In-line/
Belt sample
RTB
General/
Belt sample
DB
KTB
European/Belt
sample
MB
Clean/In-line/
Screw sample
ACH
RCH
Clean/
Screw sample
KCH
無塵/内嵌/
皮带仕様
Clean/In-line/
Belt sample
RCB
Clean/
Belt sample
KCB
General/KKT/
Screw sample
KKT
General/
Rack and
pinion sample
GR
General/
Linear motor
sample
LM
Reference

European belt series

MB110

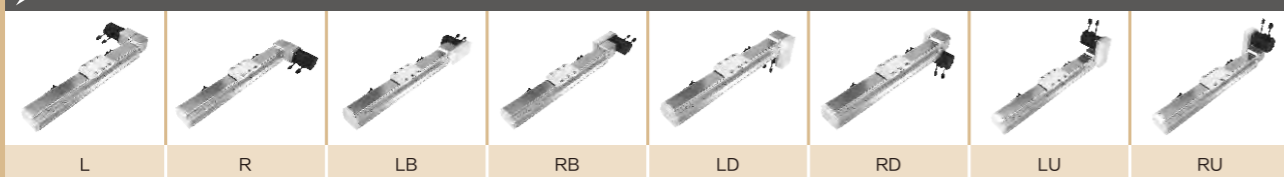
1-axis



This figure is for reference only, the shipping specifications are detailed in the dimension drawing.

Maximum stroke **5500mm** Maximum speed **5000mm/s** Motor capacity **750W** Belt Width **50mm** Linear Guide **23X19-1pc**

Motor direction



Ordering method

MB110 - 2000 - L - P7B - C4 - NL - 10 - Special

Model: MB110 - 2000 - L - P7B - C4 - NL - 10 - Special

Special Order No.

Motor position	Stroke	Grease Fitting Position	Limit sensor
L Motor external left side	100-5500mm	NL On The Left of The Slider	Out side
R Motor external right side	100mm Pitch	NR On The Right of The Slider	C Motor side
LB Motor external left fold			D Opposite motor side
RB Motor external right fold			No sensor
LU Motor upward to the left			E No sensor
RU Motor upward to the right			
LD Motor down to the left			
RD Motor down to the right			

Motor position: L, R, LB, RB, LU, RU, LD, RD

Stroke: 100-5500mm, 100mm Pitch

Grease Fitting Position: NL (On The Left of The Slider), NR (On The Right of The Slider)

Limit sensor: Out side, C (Motor side), D (Opposite motor side), E (No sensor)

Dimensions: M7 Servo motor: PCD90-M6-shift ϕ 19mm, B; P7 Servo motor: PCD90-M5-shift ϕ 19mm

Home sensor: Out side, C (Motor side), D (Opposite motor side), E (No sensor)

Gearbox Ratio: 10 10:1, 15 15:1, 20 20:1, N None Gearbox Type

If no brake, no description.

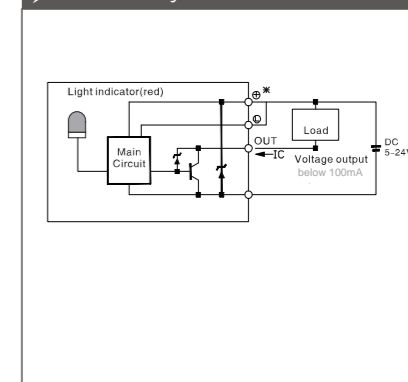
When the stroke is 50mm, the sensor installation has the following restrictions:
 • Home sensor and limit sensor has to be installed on the different side of body.
 • Both sides of slider need to install the sensor trigger device.

Specification

Spec	Repeatability	mm	± 0.1			
	Lead	mm	280			
	Reduction ratio		10:1	15:1	20:1	
	Maximum speed	mm/s	1400	933	700	
	Maximum payload	Horizontal	kg	100	150	200
		Vertical	kg	23	36	50
	Rated thrust	N	765			
Stroke pitch	mm	100-5500mm/100 pitch				
Parts	AC Servo motor output	W	750			
	Belt width	mm	50			
	High rigidity linear guide	mm	W23XH19			
	Home sensor	Outside	EE-SX672(NPN)			

- When using vertically, if the belt breaks, the load may fall. Please pay attention.
- When the sliding table is not equipped with a reducer, the lead is 280.
- Acceleration and deceleration value is set 0.4 second.

Sensor layout

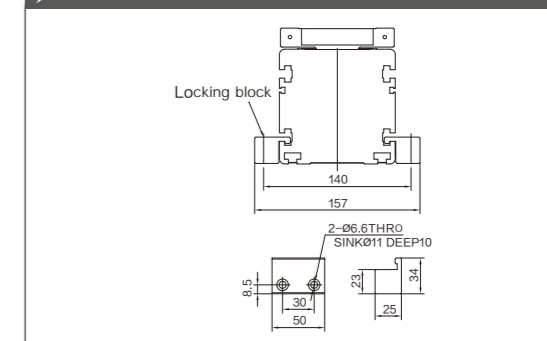


Numbers of fixing screws

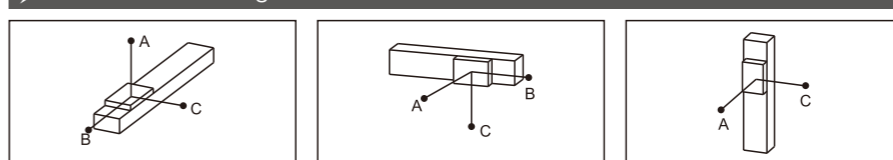
M8 nuts Qty.(by stroke)			
Stroke	Quantity	Stroke	Quantity
100-500	4	2600-3000	14
600-1000	6	3100-3500	16
1100-1500	8	3600-4000	18
1600-2000	10	4100-4500	20
2100-2500	12	4600-5000	22

Standard mounting method is fix from the bottom, using the M5 bolt and nut.

Installation Instructions & Dimensions



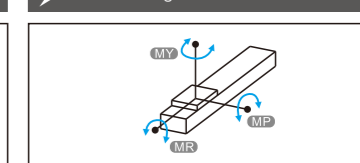
Allowable overhang



(Unit:mm)				(Unit:mm)				(Unit:mm)				
Horizontal Installation	A	B	C	Wall Installation	A	B	C	Vertical Installation	A	C		
10:1	60kg	1110	195	25	60kg	25	195	1110	10:1	12kg	1300	1300
	80kg	750	126	16	80kg	16	126	750		18kg	870	870
	100kg	550	85	11	100kg	11	85	550		23kg	680	680
15:1	90kg	1400	160	20	90kg	20	160	1400	15:1	14kg	1480	1480
	120kg	940	100	13	120kg	13	100	940		25kg	830	830
	150kg	650	63	8	150kg	8	63	650		36kg	575	575
20:1	120kg	1400	115	15	120kg	15	115	1400	20:1	30kg	750	750
	160kg	900	65	8	160kg	8	65	900		40kg	560	560
	200kg	550	35	5	200kg	5	35	550		50kg	450	450

- The torque value in the chart indicate the center of gravity.
- If the total length exceeds 1000mm, the steel strip may be deformed to avoid wall hanging.
- Operation life is 10,000km when the product is using under the specified conditions.

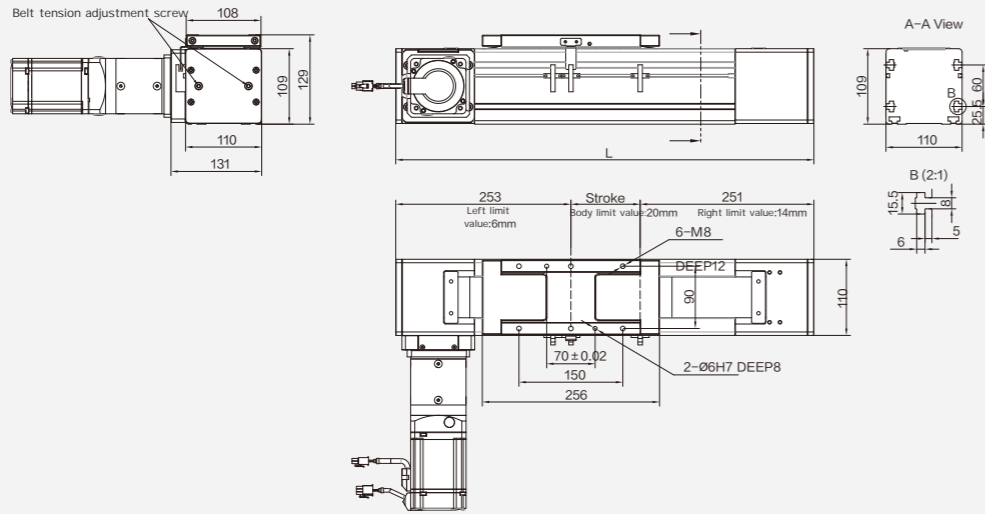
Static loading moment



(Unit:N.m)	
MY	1479.3
MP	1479.3
MR	189.7

Motor external left side / Motor external right side

1-axis MB110



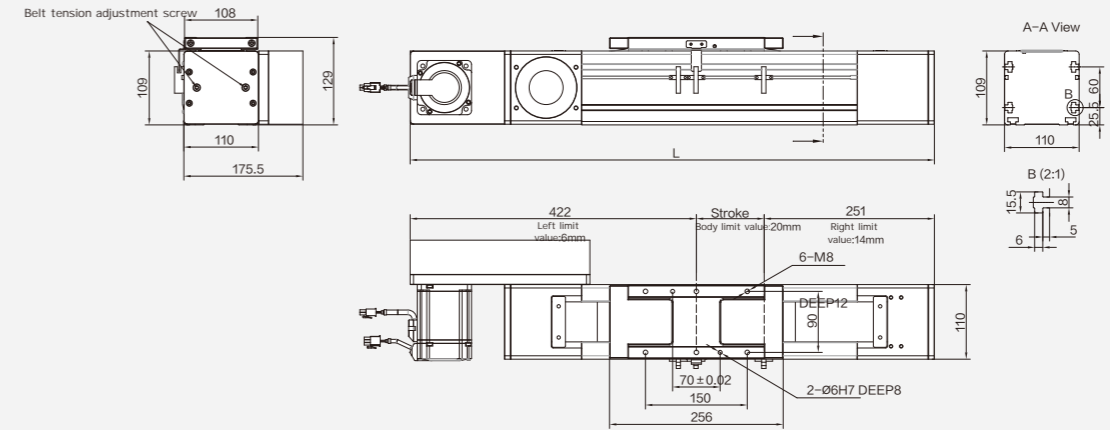
(Unit:mm)

Motor external left side	Stroke	1000	1100	1200	1300	1400	1500	1600	1700	1800	1900	2000	2100	2200	2300	2400	2500	2600	2700	2800	2900	3000	3100	3200
	L	1504	1604	1704	1804	1904	2004	2104	2204	2304	2404	2504	2604	2704	2804	2904	3004	3104	3204	3304	3405	3504	3604	3704
	KG	10.7	11	11.3	11.6	11.9	12.2	12.5	12.8	13.1	13.4	13.7	14	14.3	14.6	14.9	15.2	15.5	15.8	16.1	16.4	16.7	17	17.3

Motor external right side	Stroke	3300	3400	3500	3600	3700	3800	3900	4000	4100	4200	4300	4400	4500	4600	4700	4800	4900	5000	5100	5200	5300	5400	5500
	L	3804	3904	4004	4104	4204	4304	4404	4504	4604	4704	4804	4904	5004	5104	5204	5304	5404	5504	5604	5704	5804	5904	6004
	KG	17.5	17.8	18.1	18.4	18.7	19	19.3	19.6	19.9	20.2	20.5	20.8	21.1	21.4	21.7	22	22.3	22.6	22.9	23.2	23.5	23.8	24.1

Motor external left fold / Motor external right fold

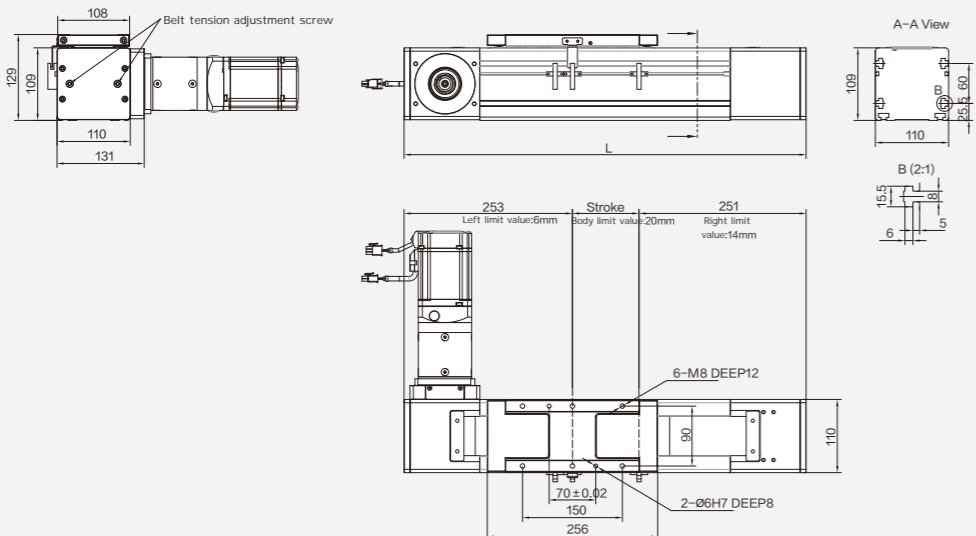
1-axis MB110



(Unit:mm)

Motor external left fold	Stroke	1000	1100	1200	1300	1400	1500	1600	1700	1800	1900	2000	2100	2200	2300	2400	2500	2600	2700	2800	2900	3000	3100	3200
	L	1673	1773	1873	1973	2073	2173	2273	2373	2473	2573	2673	2773	2873	2973	3073	3173	3273	3373	3473	3573	3673	3773	3873
	KG	41.3	41.8	42.3	42.8	43.3	43.8	44.3	44.8	45.3	45.8	46.3	46.8	47.3	47.8	48.3	48.8	49.3	49.8	50.3	50.8	51.3	51.8	52.3

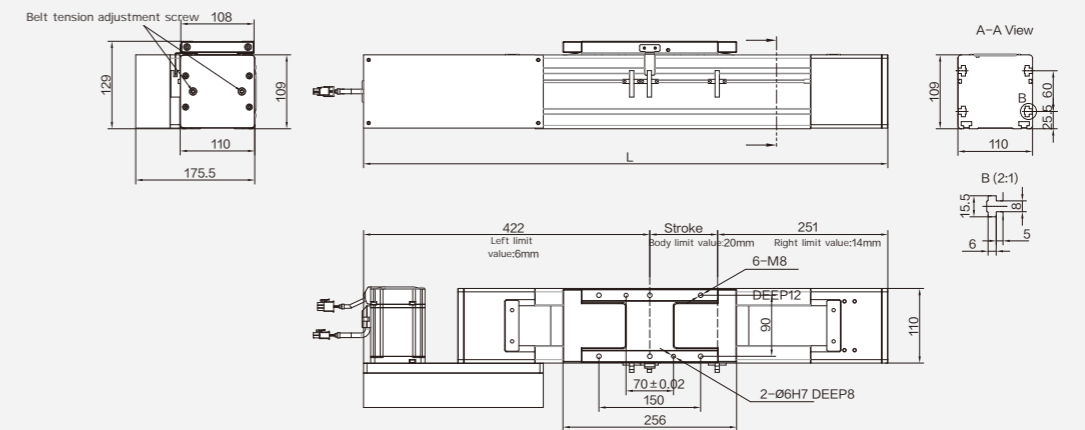
Motor external right fold	Stroke	3300	3400	3500	3600	3700	3800	3900	4000	4100	4200	4300	4400	4500	4600	4700	4800	4900	5000	5100	5200	5300	5400	5500
	L	3973	4073	4173	4273	4373	4473	4573	4673	4773	4873	4973	5073	5173	5273	5373	5473	5573	5673	5773	5873	5973	6073	6173
	KG	52.8	53.3	53.8	54.3	54.8	55.3	55.8	56.3	56.8	57.3	57.8	58.3	58.8	59.3	59.8	60.3	60.8	61.3	61.8	62.3	62.8	63.3	63.8



(Unit:mm)

Motor external right side	Stroke	1000	1100	1200	1300	1400	1500	1600	1700	1800	1900	2000	2100	2200	2300	2400	2500	2600	2700	2800	2900	3000	3100	3200
	L	1504	1604	1704	1804	1904	2004	2104	2204	2304	2404	2504	2604	2704	2804	2904	3004	3104	3204	3304	3405	3504	3604	3704
	KG	10.7	11	11.3	11.6	11.9	12.2	12.5	12.8	13.1	13.4	13.7	14	14.3	14.6	14.9	15.2	15.5	15.8	16.1	16.4	16.7	17	17.3

Motor external left side	Stroke	3300	3400	3500	3600	3700	3800	3900	4000	4100	4200	4300	4400	4500	4600	4700	4800	4900	5000	5100	5200	5300	5400	5500
	L	3804	3904	4004	4104	4204	4304	4404	4504	4604	4704	4804	4904	5004	5104	5204	5304	5404	5504	5604	5704	5804	5904	6004
	KG	17.5	17.8	18.1	18.4	18.7	19	19.3	19.6	19.9	20.2	20.5	20.8	21.1	21.4	21.7	22	22.3	22.6	22.9	23.2	23.5	23.8	24.1



(Unit:mm)

Motor external right fold	Stroke	1000	1100	1200	1300	1400	1500	1600	1700	1800	1900	2000	2100	2200	2300	2400	2500	2600	2700	2800	2900	3000	3100	3200
	L	1673	1773	1873	1973	2073	2173	2273	2373	2473	2573	2673	2773	2873	2973	3073	3173	3273	3373	3473	3573	3673	3773	3873
	KG	41.3	41.8	42.3	42.8	43.3	43.8	44.3	44.8	45.3	45.8	46.3	46.8	47.3	47.8	48.3	48.8	49.3	49.8	50.3	50.8	51.3	51.8	52.3

Motor external left fold	Stroke	3300	3400	3500	3600	3700	3800	3900	4000	4100	4200	4300	4400	4500	4600	4700	4800	4900	5000	5100	5200	5300	5400	5500
	L	3973	4073	4173	4273	4373	4473	4573	4673	4773	4873	4973	5073	5173	5273	5373	5473	5573	5673	5773	5873	5973	6073	6173
	KG	52.8	53.3	53.8	54.3	54.8	55.3	55.8	56.3	56.8	57.3	57.8	58.3	58.8	59.3	59.8	60.3	60.8	61.3	61.8	62.3	62.8	63.3	63.8

ATH3
ATH4
ATH5
ATH8
ATH12
ATH15
RTH4
RTH5
RTH8
RTH12
DG60
DG100
DG135
KTH13
KTH14
KTH17
KTH22
KTH27
DMB5
DMB10
DMB20
DMB30
DMB40
EMB5
EMB10
EMB20
RTB5
RTB8
RTB12
RTB15
DB100
DB135
KTB14M
KTB17M
KTB22M
MB65
MB80

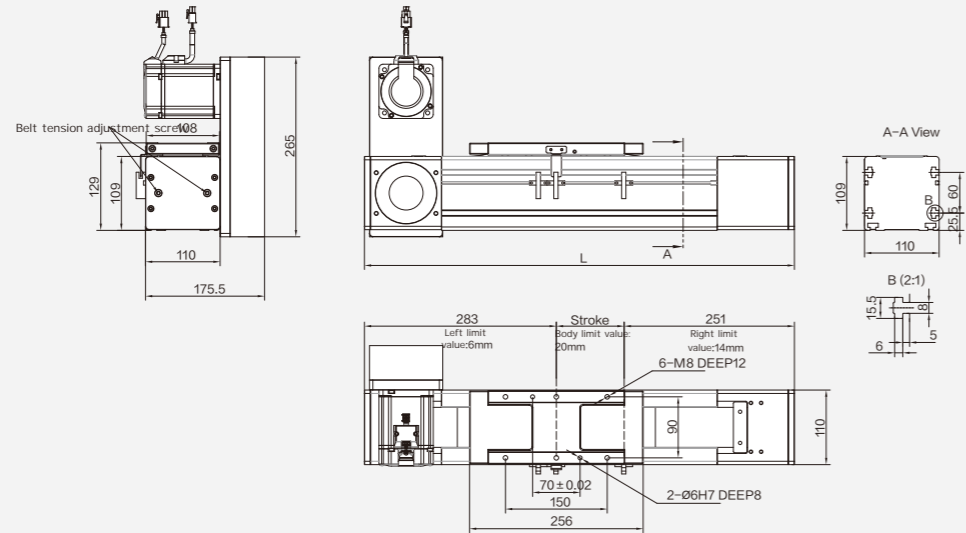
MB110

ACH4
ACH5
ACH8
ACH12
ACH15
RCH4
RCH5
RCH8
RCH12
KCH14
KCH17
KCH22
RCB5
RCB8
RCB12
RCB15
KCB14
KCB17
KCB22
KKT50
KKT60
KKT86
GR14
GR17
GR22
LM80
LM140
LM170
LM210

General/
In-line/
Screw sample
ATH
RTH
General/
Screw sample
DG
KTH
General/
Electric cylinder
sample
DMB
EY
General/In-line/
/Belt sample
RTB
General/
Belt sample
DB
KTB
General
European/Belt
sample
MB
Clean/In-line/
Screw sample
ACH
RCH
Clean/
Screw sample
KCH
Clean/In-line/
Belt sample
RCB
Clean/
Belt sample
KCB
General/KKT/
Screw sample
KKT
General/
Rack and
pinion sample
GR
General/
Linear motor
sample
LM
Reference

Motor upward to the left / Motor upward to the right

1-axis MB110



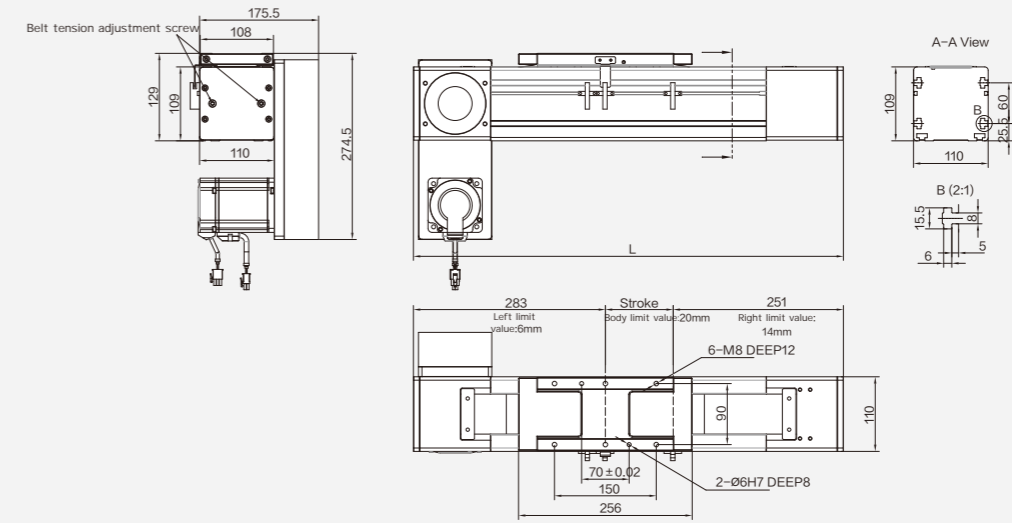
(Unit:mm)

Motor upward to the left	Stroke	1000	1100	1200	1300	1400	1500	1600	1700	1800	1900	2000	2100	2200	2300	2400	2500	2600	2700	2800	2900	3000	3100	3200
	L	1534	1634	1734	1834	1934	2034	2134	2234	2334	2434	2534	2634	2734	2834	2934	3034	3134	3234	3334	3434	3534	3634	3734
KG	41.3	41.8	42.3	42.8	43.3	43.8	44.3	44.8	45.3	45.8	46.3	46.8	47.3	47.8	48.3	48.8	49.3	49.8	50.3	50.8	51.3	51.8	52.3	

Motor upward to the right	Stroke	3300	3400	3500	3600	3700	3800	3900	4000	4100	4200	4300	4400	4500	4600	4700	4800	4900	5000	5100	5200	5300	5400	5500
	L	3834	3934	4034	4134	4234	4334	4434	4534	4634	4734	4834	4934	5034	5134	5234	5334	5434	5534	5634	5734	5834	5934	6034
KG	52.8	53.3	53.8	54.3	54.8	55.3	55.8	56.3	56.8	57.3	57.8	58.3	58.8	59.3	59.8	60.3	60.8	61.3	61.8	62.3	62.8	63.3	63.8	

Motor down to the left / Motor down to the right

1-axis MB110



(Unit:mm)

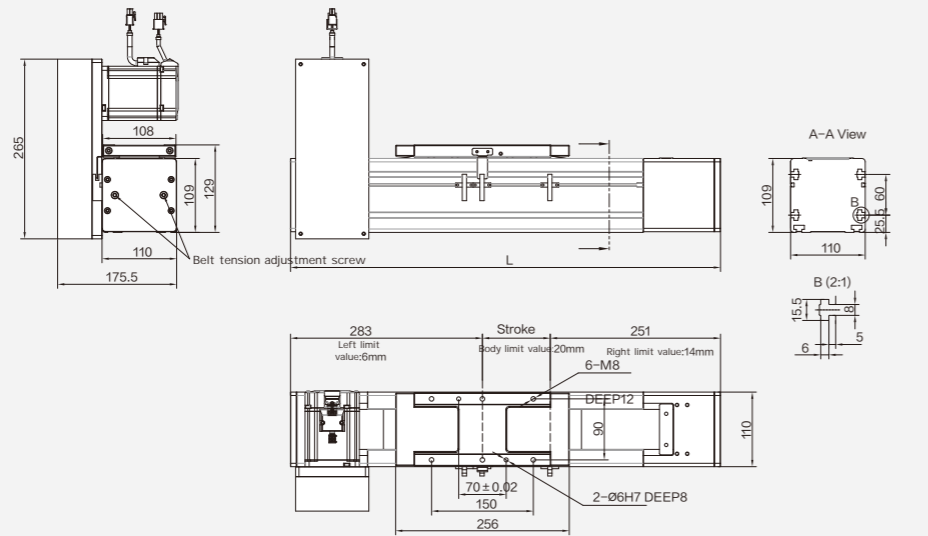
Motor down to the left	Stroke	1000	1100	1200	1300	1400	1500	1600	1700	1800	1900	2000	2100	2200	2300	2400	2500	2600	2700	2800	2900	3000	3100	3200
	L	1534	1634	1734	1834	1934	2034	2134	2234	2334	2434	2534	2634	2734	2834	2934	3034	3134	3234	3334	3434	3534	3634	3734
KG	41.3	41.8	42.3	42.8	43.3	43.8	44.3	44.8	45.3	45.8	46.3	46.8	47.3	47.8	48.3	48.8	49.3	49.8	50.3	50.8	51.3	51.8	52.3	

Motor down to the right	Stroke	3300	3400	3500	3600	3700	3800	3900	4000	4100	4200	4300	4400	4500	4600	4700	4800	4900	5000	5100	5200	5300	5400	5500
	L	3834	3934	4034	4134	4234	4334	4434	4534	4634	4734	4834	4934	5034	5134	5234	5334	5434	5534	5634	5734	5834	5934	6034
KG	52.8	53.3	53.8	54.3	54.8	55.3	55.8	56.3	56.8	57.3	57.8	58.3	58.8	59.3	59.8	60.3	60.8	61.3	61.8	62.3	62.8	63.3	63.8	

ATH3
ATH4
ATH5
ATH8
ATH12
ATH15
RTH4
RTH5
RTH8
RTH12
DG60
DG100
DG135
KTH13
KTH14
KTH17
KTH22
KTH27
DMB5
DMB10
DMB20
DMB30
DMB40
EMB5
EMB10
EMB20
RTB5
RTB8
RTB12
RTB15
DB100
DB135
KTB14M
KTB17M
KTB22M
MB65
MB80

MB110

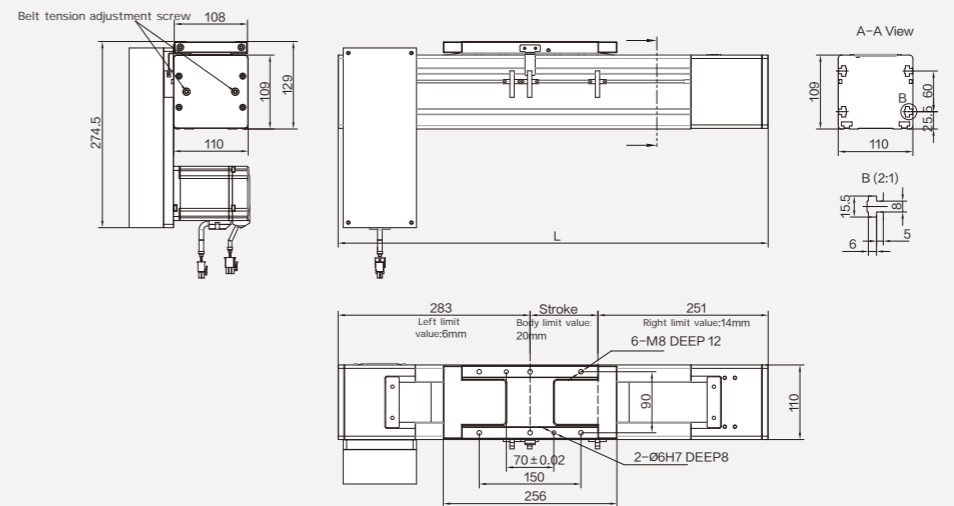
ACH4
ACH5
ACH8
ACH12
ACH15
RCH4
RCH5
RCH8
RCH12
KCH14
KCH17
KCH22
RCB5
RCB8
RCB12
RCB15
KCB14
KCB17
KCB22
KKT50
KKT60
KKT86
GR14
GR17
GR22
LM80
LM140
LM170
LM210



(Unit:mm)

Motor upward to the right	Stroke	1000	1100	1200	1300	1400	1500	1600	1700	1800	1900	2000	2100	2200	2300	2400	2500	2600	2700	2800	2900	3000	3100	3200
	L	1534	1634	1734	1834	1934	2034	2134	2234	2334	2434	2534	2634	2734	2834	2934	3034	3134	3234	3334	3434	3534	3634	3734
KG	41.3	41.8	42.3	42.8	43.3	43.8	44.3	44.8	45.3	45.8	46.3	46.8	47.3	47.8	48.3	48.8	49.3	49.8	50.3	50.8	51.3	51.8	52.3	

Motor upward to the right	Stroke	3300	3400	3500	3600	3700	3800	3900	4000	4100	4200	4300	4400	4500	4600	4700	4800	4900	5000	5100	5200	5300	5400	5500
	L	3834	3934	4034	4134	4234	4334	4434	4534	4634	4734	4834	4934	5034	5134	5234	5334	5434	5534	5634	5734	5834	5934	6034
KG	52.8	53.3	53.8	54.3	54.8	55.3	55.8	56.3	56.8	57.3	57.8	58.3	58.8	59.3	59.8	60.3	60.8	61.3	61.8	62.3	62.8	63.3	63.8	



(Unit:mm)

Motor down to the right	Stroke	1000	1100	1200	1300	1400	1500	1600	1700	1800	1900	2000	2100	2200	2300	2400	2500	2600	2700	2800	2900	3000	3100	3200
	L	1534	1634	1734	1834	1934	2034	2134	2234	2334	2434	2534	2634	2734	2834	2934	3034	3134	3234	3334	3434	3534	3634	3734
KG	41.3	41.8	42.3	42.8	43.3	43.8	44.3	44.8	45.3	45.8	46.3	46.8	47.3	47.8	48.3	48.8	49.3	49.8	50.3	50.8	51.3	51.8	52.3	

Motor down to the right	Stroke	3300	3400	3500	3600	3700	3800	3900	4000	4100	4200	4300	4400	4500	4600	4700	4800	4900	5000	5100	5200	5300	5400	5500
	L	3834	3934	4034	4134	4234	4334	4434	4534	4634	4734	4834	4934	5034	5134	5234	5334	5434	5534	5634	5734	5834	5934	6034
KG	52.8	53.3	53.8	54.3	54.8	55.3	55.8	56.3	56.8	57.3	57.8	58.3	58.8	59.3	59.8	60.3	60.8	61.3	61.8	62.3	62.8	63.3	63.8	

General/
In-line/
Screw sample

ATH
RTH

General/
Screw sample

DG
KTH

General/
Electric cylinder
sample

DMB
EMB

General/In-line
/Belt sample

RTB

General/
Belt sample

DB
KTB

General/
European/Belt
sample

MB

Clean/In-line/
Screw sample

ACH
RCH

Clean/
Screw sample

KCH

Clean/In-line/
Belt sample

RCB

Clean/
Belt sample

KCB

General/KKT/
Screw sample

KKT

General/
Rack and
pinion sample

GR

General/
Linear motor
sample

LM

Reference

Various combinations



Various combinations



Motor mounting size

Motor mounting size						
Motor size	□ 38	□ 60	□ 60	□ 80	□ 42.3	□ 86
Shaft diameter	Ø8	Ø11	Ø14	Ø19	Ø5	Ø14
Capacity w	100W	200W	400W	750W	42 Stepping motor	86 Stepping motor
Flange code	A	C	E	G	I	K
Motor mounting size						
Motor size	□ 40	□ 60	□ 60	□ 80	□ 56.4	□ 86
Shaft diameter	Ø8	Ø14	Ø14	Ø19	Ø8	Ø12.7
Capacity w	100W	200W	400W	750W	57 Stepping motor	86 Stepping motor
Flange code	B	D	F	H	J	L

Note: This table is for reference only, subject to actual size.

Purchase Guide

Ball screw drive/General environment

RTH Series

Built-in self-lubricating series

RTH5		RTH5	
	Maximum stroke 850mm Maximum load 25kg Body width 44mm		Maximum stroke 850mm Maximum load 30kg Body width 54mm

RTH8		RTH12	
	Maximum stroke 1100mm Maximum load 50kg Body width 82mm		Maximum stroke 1300mm Maximum load 110kg Body width 120mm

KTH Series

General screw series

KTH13		KTH14		KTH17	
	Maximum stroke 1050mm Maximum load 70kg Body width 135mm		Maximum stroke 1050mm Maximum load 110kg Body width 135mm		Maximum stroke 1250mm Maximum load 120kg Body width 170mm

KTH22		KTH27	
	Maximum stroke 1500mm Maximum load 150kg Body width 220mm		Maximum stroke 1500mm Maximum load 350kg Body width 270mm

Ball screw drive/General environment

KKT Series

KKT series

KKT50		KKT60		KKT86	
	Maximum track length 300mm Basic dynamic rated load 1813N Basic static load rating 2910N Body width 50mm		Maximum track length 600mm Basic dynamic rated load 3377N Basic static load rating 5625N Body width 60mm		Maximum track length 940mm Basic dynamic rated load 6429N Basic static load rating 11387N Body width 86mm

Rack and pinion/General environment

GR Series

Rack and pinion series

GR14		GR17		GR22	
	Maximum stroke 3500mm Maximum load 88kg Body width 135mm		Maximum stroke 3500mm Maximum load 102kg Body width 170mm		Maximum stroke 3500mm Maximum load 150kg Body width 220mm







Purchase Guide

RTB Series

RTB series:
1. 1.50mm shorter than ATB series
2. Compact size for limited installation space.



Inline belt series	
RTB5  Maximum stroke 850mm Maximum load 5kg Body width 54mm	RTB8  Maximum stroke 1750mm Maximum load 15kg Body width 82mm

RTB12  Maximum stroke 1750mm Maximum load 25kg Body width 120mm	RTB15  Maximum stroke 1750mm Maximum load 45kg Body width 155mm
---	---

KTB Series

General belt series

KTB14M  Maximum stroke 3050mm Maximum load 25kg Body width 135mm	KTB17M  Maximum stroke 3050mm Maximum load 45kg Body width 170mm	KTB22M  Maximum stroke 3400mm Maximum load 85kg Body width 220mm
--	--	--

MB Series

European belt series

MB65  Maximum stroke 5500mm Maximum load 60kg Body width 65mm	MB80  Maximum stroke 5500mm Maximum load 100kg Body width 80mm	MB110  Maximum stroke 5500mm Maximum load 200kg Body width 110mm
--	---	---

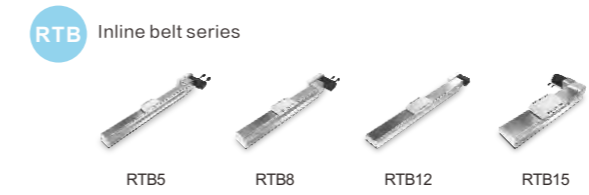


Simple Selection Table–Single Axis Series

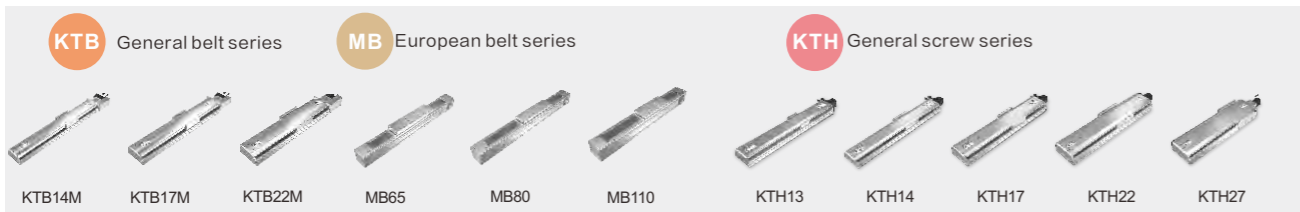


Model Specification	ATH3	ATH4	ATH5	ATH8	ATH12	ATH15		
Motor Output (W)	50	100	100	200/400	400	400	750	
Repeatability (mm)	± 0.005	± 0.005	± 0.005	± 0.005	± 0.005	± 0.005		
Ball Screw Lead (mm)	1/2/5	2/5/10	5/10/20	5/10/20	5/10/20/32	5/10/20/40		
Maximum speed (mm/s)	50/100/300	100/250/500	250/500/1000	250/500/1000	250/500/1000/1600	250/500/1000/2000		
Maximum payload (kg)	Horizontal	5/5/3	25/20/12	30/15/10	50/30/18	110/88/40/30	120/110/75/22	120/120/83/43
	Vertical	3/2/0.8	8/8/3.5	10/5/2.5	15/8/3	33/22/10/8	40/30/14/7	50/40/25/12
Stroke (mm)	10-200	50-800	50-800	50-1050	50-1250	50-1250		

Model Specification	RTH4	RTH5	RTH8	RTH12	
Motor Output (W)	100	100	200/400	400	
Repeatability (mm)	± 0.005	± 0.005	± 0.005	± 0.005	
Ball Screw Lead (mm)	2/5/10	5/10/20	5/10/20	5/10/20/32	
Maximum speed (mm/s)	100/250/500	250/500/1000	250/500/1000	250/500/1000/1600	
Maximum payload (kg)	Horizontal	25/20/12	30/15/10	50/30/18	110/88/40/30
	Vertical	8/8/3.5	10/5/2.5	15/8/3	33/22/10/8
Stroke (mm)	50-850	50-850	50-1100	50-1300	



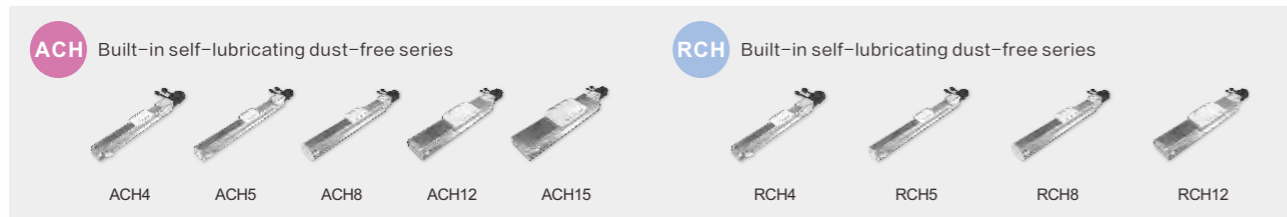
Model Specification	RTB5	RTB8	RTB12	RTB15	
Motor Output (W)	100	200	200	400	
Repeatability (mm)	± 0.04	± 0.04	± 0.04	± 0.04	
Ball Screw Lead (mm)	30/60	33/66	36/72	42/84	
Maximum speed (mm/s)	1500/3000	1650/3300	1800/3600	2100/4200	
Maximum payload (kg)	Horizontal	5	15	25	45
	Vertical	-	-	-	-
Stroke (mm)	50-850	50-1750	50-1750	50-1750	



Model Specification	KTB14M	KTB17M	KTB22M	MB65	MB80	MB110	
Motor Output (W)	200	400	750	400	400/750	750	
Repeatability (mm)	± 0.04	± 0.04	± 0.04	± 0.1	± 0.1	± 0.1	
Ball Screw Lead (mm)	40	40	40	130	200	280	
Gearbox Ratio	-	-	-	3:1/5:1/7:1/10: 1	5:1/7:1/10:1	10:1/15:1/20:1	
Maximum speed (mm/s)	2000	2000	2000	2166/1300/928/650	2000/1428/1000	1400/933/700	
Maximum payload (kg)	Horizontal	25	45	85	30/45/55/60	40/60/100	100/150/200
	Vertical	-	-	-	9/15/16/17	14/21/24	23/36/50
Stroke (mm)	50-3050	50-3050	50-3400	100-5500	100-5500	100-5500	

Model Specification	KTH13	KTH14		KTH17		KTH22	KTH27		
Motor Output (W)	200/400	200	400	400	750	750	750	1000	
Repeatability (mm)	± 0.005	± 0.005		± 0.005		± 0.005	± 0.005		
Ball Screw Lead (mm)	5/10/20/32	5/10/20/32		5/10/20/40		5/10/25/32	5/10/20/32		
Maximum speed (mm/s)	250/500/1000/1600	250/500/1000/1600		250/500/1000/2000		250/500/1250/1600	250/500/1000/1600		
Maximum payload (kg)	Horizontal	70/47/24/13	95/75/35/15	110/88/40/30	120/110/75/22	120/120/83/43	150/150/105/60	250/200/100/50	350/300/200/100
	Vertical	17/12/6/-	27/18/7/-	33/22/10/8	40/30/14/7	50/40/25/12	55/45/20/20	100/80/40/20	140/120/80/40
Stroke (mm)	50-1050	50-1050		50-1250		50-1500	100-1500		

Simple Selection Table-Single Axis Series



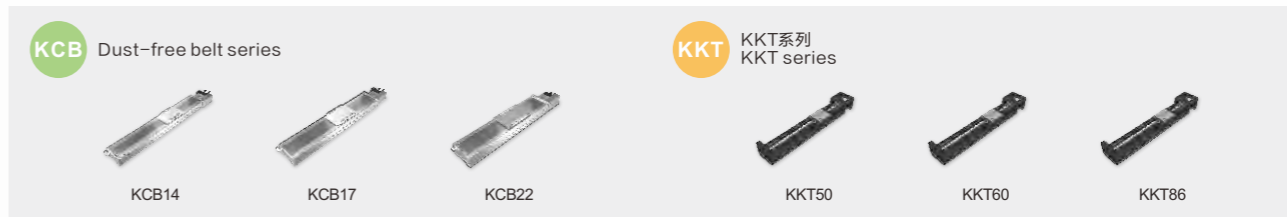
Model Specification	ACH4	ACH5	ACH8	ACH12	ACH15	
Motor Output (W)	100	100	200/400	400	400	750
Repeatability (mm)	±0.005	±0.005	±0.005	±0.005	±0.005	
Ball Screw Lead (mm)	2/5/10	5/10/20	5/10/20	5/10/20/32	5/10/20/40	
Maximum speed (mm/s)	100/250/500	250/500/1000	250/500/1000	250/500/1000/1600	250/500/1000/2000	
Maximum payload (kg)	Horizontal	25/20/12	30/15/10	50/30/18	110/88/40/30	120/120/83/43
	Vertical	8/8/3.5	10/5/2.5	15/8/3	33/22/10/8	40/30/14/7
Stroke (mm)	50-800	50-800	50-1050	50-1250	50-1250	

Model Specification	RCH4	RCH5	RCH8	RCH12
Motor Output (W)	100	100	200/400	400
Repeatability (mm)	±0.005	±0.005	±0.005	±0.005
Ball Screw Lead (mm)	2/5/10	5/10/20	5/10/20	5/10/20/32
Maximum speed (mm/s)	100/250/500	250/500/1000	250/500/1000	250/500/1000/1600
Maximum payload (kg)	Horizontal	25/20/12	30/15/10	50/30/18
	Vertical	8/8/3.5	10/5/2.5	15/8/3
Stroke (mm)	50-850	50-850	50-1100	50-1300



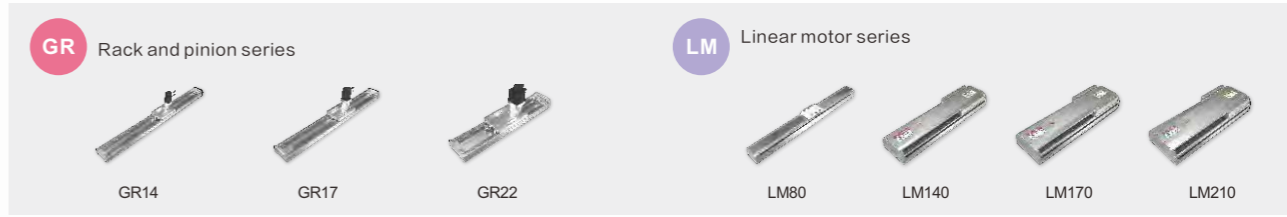
Model Specification	KCH14		KCH17		KCH22
Motor Output (W)	200	400	400	750	750
Repeatability (mm)	±0.005		±0.005		±0.005
Ball Screw Lead (mm)	5/10/20/32		5/10/20/40		5/10/25/32
Maximum speed (mm/s)	250/500/1000/1600		250/500/1000/2000		250/500/1250/1600
Maximum payload (kg)	Horizontal	95/75/35/15	110/88/40/30	120/110/75/22	120/120/83/43
	Vertical	27/18/7/-	33/22/10/8	40/30/14/7	50/40/25/12
Stroke (mm)	50-1050		50-1250		50-1500

Model Specification	RCB5	RCB8	RCB12	RCB15
Motor Output (W)	100	200	200	400
Repeatability (mm)	±0.04	±0.04	±0.04	±0.04
Ball Screw Lead (mm)	30/60	33/66	36/72	42/84
Maximum speed (mm/s)	1500/3000	1650/3300	1800/3600	2100/4200
Maximum payload (kg)	Horizontal	5	15	25
	Vertical	-	-	-
Stroke (mm)	50-850	50-1750	50-1750	50-1750



Model Specification	KCB14	KCB17	KCB22
Motor Output (W)	200	400	750
Repeatability (mm)	±0.04	±0.04	±0.04
Ball Screw Lead (mm)	40	40	40
Maximum speed (mm/s)	2000	2000	2000
Maximum payload (kg)	Horizontal	25	45
	Vertical	-	-
Stroke (mm)	50-3050	50-3050	50-3400

Model Specification	KKT50	KKT60	KKT86
Motor Output (W)	100	100	100/200
Repeatability (mm)	±0.01	±0.01	±0.01
Ball Screw Lead (mm)	2	5/10	10/20
Maximum speed (mm/s)	270	390/790	520/1050
load	Dynamic load rating(N)	1813	3377/2107
	Rated static load(N)	2910	5625/3234
Lehgth (mm)	150/200/250/300	150/200/300/400/500/600	340/440/540/640/740/940



Model Specification	GR14	GR17	GR22
Motor Output (W)	400	750	750
Repeatability (mm)	±0.04	±0.04	±0.04
Gearbox Ratio	3:1/5:1/7:1/10:1	3:1/5:1/7:1/10:1	3:1/5:1/7:1/10:1
Gear lead (mm)	33.32/19.99/14.28/10.00	48.87/29.32/20.94/14.66	48.87/29.32/20.94/14.66
Maximum speed (mm/s)	1665/1000/715/500	2443/1466/1047/733	1633/966/700/486
Maximum payload (kg)	Horizontal	30/40/64/88	31/63/83/102
	Vertical	8/10/18/22	9/18/25/33
Stroke (mm)	1000-3500	1000-3500	1000-3500

Model Specification	LM80	LM140			LM170			LM210			
Standard thrust	82	81	152	218	122	230	330	161	302	435	
Repeatability (mm)	MG ± 0.005 / RG ± 0.003	MG ± 0.005 / RG ± 0.003			MG ± 0.005 / RG ± 0.003			MG ± 0.005 / RG ± 0.003			
Maximum speed (mm/s)	4000	3000			3000			3000			
Thrust	Continuous thrust (N)	82	81	152	218	233	230	330	161	302	435
	Peak thrust (N)	256.7	265	534	791	417	840	1241	568	1146	1700
Stroke (mm)	100-1900	72-3816	82-3730	96-3648	72-5832	85-5746	96-5664	72-3816	82-3730	96-3648	

Lim-Tec[®]

Feb.25,2016 Lim-tec successfully landed on NEEQ with the code 836388, leading the new height of linear motion development in China.

Ever since 2005, Joint Venture Enterprise Lim-tec (Beijing) Transmission Equipment Co.,Ltd was set up by Limtec Group and Beijing Reloh International Trade Co., Ltd to introduce European most advanced linear motion technology and the concept of modular combination design, guide the new direction of development for domestic screw jack, electric actuator and slide industry.

Based in Beijing China, we have more than 10 offices distributed throughout the country to provide high-quality products, full range of technical support and prompt after-sales service at home and abroad.Up to now, there were more than 100000 sets of products successful used in automobile equipment, automation assembly, metallurgical industry,aerospace industry,port machinery and other industries.

Established automation assembly department in the year of 2008,Lim-tec has researched and developed six-DOF platform,servo pressure system, simulator and some other non-standard automation equipment.

With the gradual popularization of industry strategy 4.0 and the development of industry 5.0,green and sustainable products lead the tread in society.As the essential components supplier for industry automation robot,Lim-tec products will get considerable development.It's just a starting for Lim-tec second take-off on NEEQ,80 millions RMB have been re-invested to bring in advanced processing equipment and expand production capacity to more than 50 thousand sets per year,to build Lim-tec the world's most competitive and professional linear actuator/screw jack/servo actuator /electric slide manufacturing base.

