

Rod Ends

BÖNNEKAMP

Bönnekamp is a very well-known brand with a strong market share owned by ATB Automation.

More than 30 years of high quality mechanical components have been applied in various (OEM) industries. The main focus is on Clevises, Rod Ends and Ball Joints.

Our standard products, but also custom made products, are produced on machines which fulfill the highest quality requirements.

Non standard products can be designed or copied by samples / drawings.

The Bönnekamp mechanical components are quality tested with modern professional testing machines.

The whole production process is under control of ISO9001:2008 and ISO/TS16949.

Excellent Products, remarkable Performance and... interesting Price!

Real value for money! This is where the Bönnekamp brand stands and cares for.

Based on the service principle of direct availability, faithfulness and custom-orientation our quality products are being sold all over Europe.

Contact your distributor or visit our www.bonnekamp.eu.com website for more information.

Your inquiry will be processed with the utmost care to offer a perfect solution.

No rights can be derived from this publication.

Rod Ends

Rod Ends SI Maintenance-free	04
Rod Ends SA Maintenance-free	05
Rod Ends PHS Maintenance required	06
Rod Ends POS Maintenance required	07
Rod Ends SI-E(S), SI-ES 2RS Maintenance required	08
Rod Ends SA-E(S), SA-ES 2RS Maintenance required	09
Rod Ends GIR..UK, GIR..UK 2RS Maintenance-free	10
Rod Ends GAR..UK, GAR..UK 2RS Maintenance-free	11
Rod Ends SI-N High loaded injection	12
Rod Ends SA-N High loaded injection	13

AVAILABLE ▶

ZINC PLATED

SS 304

SS 316



Rod Ends - SI

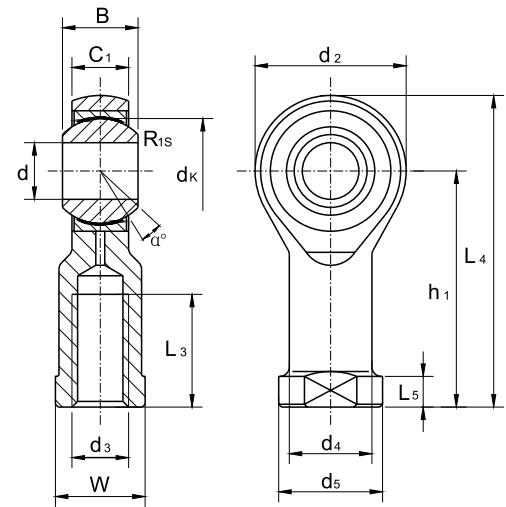


MAINTENANCE-FREE

AVAILABLE ► ZINC PLATED

SS 304

SS 316



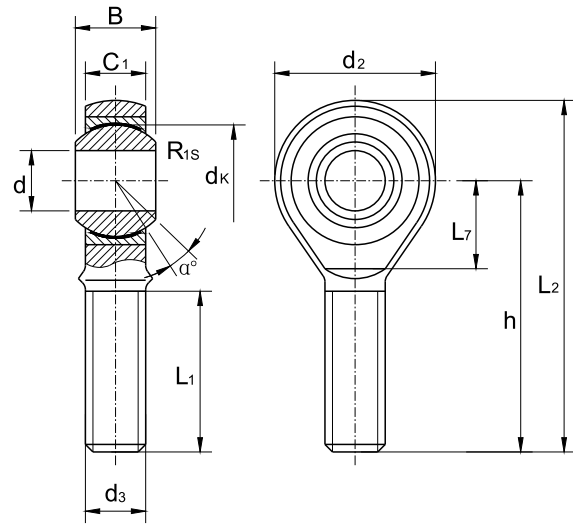
Part No.	Dimensions (mm)														Load ratings (KN)		Weight (kg)
	d	d ₃ 6H	B	C ₁	W	h ₁	d ₂	L ₄	L ₅	d ₄	d ₅	d _k	L ₃ -2	α ≈	C	C ₀	
SI 5	5	M5 × 0.8	8	6	9	27	18	36	4	8.5	11	11.11	10	13	5.70	6.00	0.016
SI 6	6	M6 × 1.0	9	6.75	11	30	20	40	5	10	13	12.70	12	13	7.20	7.65	0.022
SI 8	8	M8 × 1.25	12	9	14	36	24	48	5	12.5	16	15.875	16	14	11.6	12.9	0.047
SI 10	10	M10 × 1.5	14	10.5	17	43	28	57	6.5	15	19	19.05	20	13	14.5	18.0	0.077
SI 10 MF	10	M10 × 1.25	14	10.5	17	43	28	57	6.5	15	19	19.05	20	13	14.5	18.0	0.077
SI 12	12	M12 × 1.75	16	12	19	50	32	66	6.5	17.5	22	22.225	22	13	17.0	24.0	0.100
SI 12 MF	12	M12 × 1.25	16	12	19	50	32	66	6.5	17.5	22	22.225	22	13	17.0	24.0	0.100
SI 14	14	M14 × 2.0	19	13.5	22	57	36	75	8	20	25	25.40	25	16	24.0	31.0	0.160
SI 14 MF	14	M14 × 1.5	19	13.5	22	57	36	75	8	20	25	25.40	25	16	24.0	31.0	0.160
SI 16	16	M16 × 2.0	21	15	22	64	42	85	8	22	27	28.575	28	15	28.5	39.0	0.220
SI 16 MF	16	M16 × 1.5	21	15	22	64	42	85	8	22	27	28.575	28	15	28.5	39.0	0.220
SI 18	18	M18 × 2.5	23	16.5	27	71	44	93	10	25	31	31.75	32	15	42.5	47.5	0.320
SI 18 MF	18	M18 × 1.5	23	16.5	27	71	44	93	10	25	31	31.75	32	15	42.5	47.5	0.320
SI 20	20	M20 × 2.5	25	18	30	77	50	102	10	27.5	34	34.925	33	14	42.5	57.0	0.420
SI 20 MF	20	M20 × 1.5	25	18	30	77	50	102	10	27.5	34	34.925	33	14	42.5	57.0	0.420
SI 22 MF	22	M22 × 1.5	28	20	32	84	54	111	12	30	38	38.10	37	15	57.0	68.0	0.540
SI 25 MF	25	M24 × 2.0	31	22	36	94	60	124	12	33.5	42	42.85	42	15	68.0	85.0	0.720
SI 28 MF	28	M27 × 2.0	35	24	41	103	66	136	14	37	46	47.60	51	15	86.0	107.0	0.820
SI 30 MF	30	M30 × 2.0	37	25	41	110	70	145	15	40	50	50.80	51	17	88.0	114.0	1.100
SI 35 MF	35	M36 × 2.0	43	28	50	125	81	165.5	17	46	58	57.10	58	16			1.600
SI 40 MF	40	M42 × 2.0	49	33	55	142	91	187.5	19	53	65	66.60	62	17			2.400
SI 50 MF	50	M48 × 2.0	60	45	65	160	117	218.5	23	65	75	82.50	67	12			5.000

Material and surface treatments:

- Body: medium carbon steel zinc plating; Steel ball: bearing steel without chromium plating; Inner ring: brass H62, with PTFE.
 - Body: stainless steel 304 or stainless steel 316 is optional.
- Specials on request (only volumes).

- For left-hand thread, please add suffix "L", e.g. SIL 8.
- For fine-pitch thread, please add suffix "MF", e.g. SI8MF.
- General with forging part, also turn part is optional.

Rod Ends



Part No.	Dimensions (mm)												Load ratings (KN)		Weight (kg)
	d	d3 6g	B	C ₁	L ₁ min	d ₂	L ₇	h	L ₂	d _k	R _{1s}	α ≈	C	C ₀	Kg≈
SA 5	5	M5 × 0.8	8	6	19	18		33	42	11.11	0.3	13	5.70	6.00	0.013
SA 6	6	M6 × 1.0	9	6.75	21	20		36	46	12.70	0.3	13	7.20	7.65	0.020
SA 8	8	M8 × 1.25	12	9	25	24		42	54	15.875	0.3	14	11.6	12.9	0.038
SA 10	10	M10 × 1.5	14	10.5	28	28		48	62	19.05	0.3	13	14.5	18.0	0.055
SA 12	12	M12 × 1.75	16	12	32	32		54	70	22.225	0.3	13	17.0	24.0	0.085
SA 14	14	M14 × 2.0	19	13.5	36	36	18	60	78	25.40	0.3	16	24.0	31.0	0.14
SA 16	16	M16 × 2.0	21	15	37	42	21	66	87	28.575	0.3	15	28.5	39.0	0.21
SA 18	18	M18 × 2.5	23	16.5	41	44	22	72	94	31.75	0.3	15	42.5	47.5	0.28
SA 18 MF	18	M18 × 1.5	23	16.5	41	44	22	72	94	31.75	0.3	15	42.5	47.5	0.28
SA 20	20	M20 × 2.5	25	18	45	50	25	78	103	34.925	0.3	14	42.5	57.0	0.38
SA 20 MF	20	M20 × 1.5	25	18	45	50	25	78	103	34.925	0.3	14	42.5	57.0	0.38
SA 22 MF	22	M22 × 1.5	28	20	48	54	27	84	111	38.10	0.3	15	57.0	68.0	0.48
SA 25 MF	25	M24 × 2.0	31	22	55	60	30	94	124	42.85	0.3	15	68.0	85.0	0.64
SA 28 MF	28	M27 × 2.0	35	24	62	66	33	103	136	47.60	0.3	15	86.0	107.0	0.80
SA 30 MF	30	M30 × 2.0	37	25	66	70	35	110	145	50.80	0.3	17	88.0	114.0	1.10
SA 35 MF	35	M36 × 2.0	43	28	85	81	41	140	180.5	57.10	0.3	16	•	•	1.64
SA 40 MF	40	M42 × 2.0	49	33	90	91	46	150	195.5	66.60	0.3	17	•	•	2.30
SA 50 MF	50	M48 × 2.0	60	45	105	117	59	185	243.5	82.50	0.3	12	•	•	4.80

Material and surface treatments:

- Body: medium carbon steel zinc plating; Steel ball: bearing steel without chromium plating; Inner ring: brass H62; with PTFE.
 - Body: stainless steel 304 or stainless steel 316 is optional.
- Specials on request (only volumes).

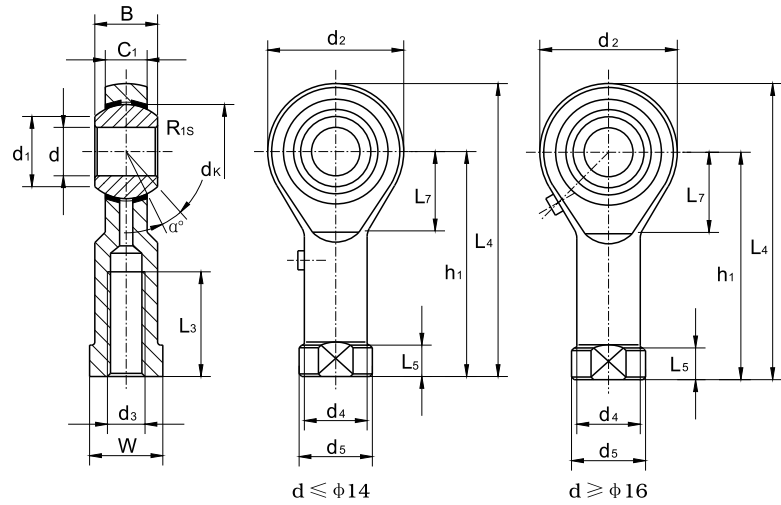
- For left-hand thread, please add suffix "L", e.g. SAL 8.
- For fine-pitch thread, please add suffix "MF", e.g. SA 8 MF.
- General with forging part, also turn part is optional.

Rod Ends - PHS



MAINTENANCE REQUIRED

AVAILABLE ► ZINC PLATED



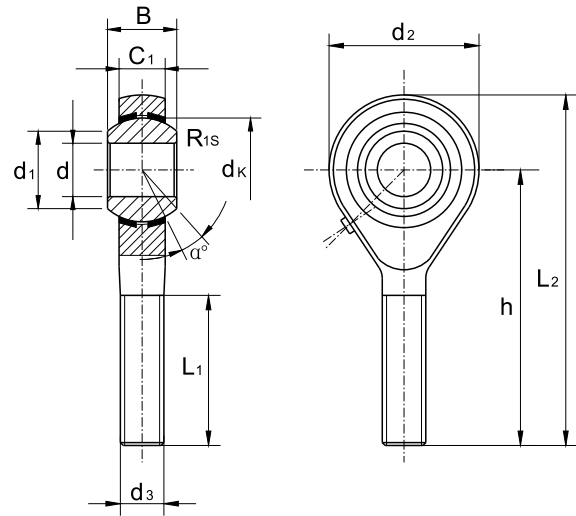
Part No.	Dimensions (mm)															Load ratings (KN)		Weight (kg)
	d	d ₃ 6H	B	C ₁	W	L ₃ min	d ₂	L ₄	h ₁	L ₅	d ₄	d ₅	d _k	d ₁	α	dyn. C	stat. C ₀	
PHS 5	5	M5 × 0.8	8	6	9	10	16	35	27	4	8.5	11	11.11	7.70	13	3.25	5.70	0.016
PHS 6	6	M6 × 1.0	9	6.75	11	12	18	39	30	5	10.0	13	12.70	8.96	13	4.30	7.20	0.022
PHS 8	8	M8 × 1.25	12	9	14	16	22	47	36	5	12.5	16	15.875	10.4	14	7.20	11.6	0.047
PHS 10	10	M10 × 1.5	14	10.5	17	20	26	56	43	6.5	15.0	19	19.05	12.9	13	10.0	14.5	0.077
PHS 10 MF	10	M10 × 1.25	14	10.5	17	20	26	56	43	6.5	15.0	19	19.05	12.9	13	10.0	14.5	0.077
PHS 12	12	M12 × 1.75	16	12	19	22	30	65	50	6.5	17.5	22	22.225	15.4	13	13.4	17.0	0.10
PHS 12 MF	12	M12 × 1.25	16	12	19	22	30	65	50	6.5	17.5	22	22.225	15.4	13	13.4	17.0	0.10
PHS 14	14	M14 × 2.0	19	13.5	22	25	34	74	57	8	20.0	25	25.40	16.9	16	17.0	24.0	0.16
PHS 14 MF	14	M14 × 1.5	19	13.5	22	25	34	74	57	8	20.0	25	25.40	16.9	16	17.0	24.0	0.16
PHS 16	16	M16 × 2.0	21	15	24	28	40	84	64	8	22.0	27	28.575	19.4	15	21.6	28.5	0.22
PHS 16 MF	16	M16 × 1.5	21	15	24	28	40	84	64	8	22.0	27	28.575	19.4	15	21.6	28.5	0.22
PHS 18	18	M18 × 2.5	23	16.5	27	32	44	93	71	10	25.0	31	31.75	21.9	15	26.0	42.5	0.32
PHS 18 MF	18	M18 × 1.5	23	16.5	27	32	44	93	71	10	25.0	31	31.75	21.9	15	26.0	42.5	0.32
PHS 20	20	M20 × 2.5	25	18	30	33	50	102	77	10	27.5	34	34.925	24.4	14	31.5	42.5	0.42
PHS 20 MF	20	M20 × 1.5	25	18	30	33	50	102	77	10	27.5	34	34.925	24.4	14	31.5	42.5	0.42
PHS 22 MF	22	M22 × 1.5	28	20	32	37	54	111	84	12	30.0	38	38.10	25.8	15	38.0	57.0	0.54
PHS 25 MF	25	M24 × 2.0	31	22	36	42	60	124	94	12	33.5	42	42.85	29.6	15	47.5	68.0	0.73
PHS 28 MF	28	M27 × 2.0	35	24	41	48	66	136	103	14	37.0	46	47.60	32.3	15	58.0	75.0	0.98
PHS 30 MF	30	M30 × 2.0	37	25	41	51	70	145	110	15	40.0	50	50.80	34.8	17	64.0	88.0	1.10

Material and surface treatments:

- Body: medium carbon steel zinc plating; Steel ball: bearing steel without chromium plating; Inner ring: brass H62.
- Outer race is lined with brass liner.

- Rod body with a lubricating hole or grease nipple.
- For left-hand thread, please add suffix "L", e.g. PHSL 8.
- For fine-pitch thread, please add suffix "MF", e.g. PHS 8MF.
- General with forging part, also turn part is optional.

Rod Ends



Part No.	Dimensions (mm)												Load ratings (KN)		Weight (kg)
	d	d3 eg	B	C ₁	L ₁ min	d ₂	h	L ₂	d _k	R _{1s}	d ₁	α ≈	dyn. C	stat. C ₀	
POS 5	5	M5 × 0.8	8	6	20	16	33	41	11.11	0.3	7.70	13	3.25	5.70	0.013
POS 6	6	M6 × 1.0	9	6.75	22	18	36	45	12.70	0.3	8.96	13	4.30	7.20	0.020
POS 8	8	M8 × 1.25	12	9	25	22	42	53	15.875	0.3	10.4	14	7.20	11.6	0.030
POS 10	10	M10 × 1.5	14	10.5	29	26	48	61	19.05	0.3	12.9	13	10.0	14.5	0.055
POS 12	12	M12 × 1.75	16	12	33	30	54	69	22.225	0.3	15.4	13	13.4	17.0	0.085
POS 14	14	M14 × 2.0	19	13.5	36	34	60	77	25.40	0.3	16.9	16	17.0	24.0	0.14
POS 16	16	M16 × 2.0	21	15	40	40	66	86	28.575	0.3	19.4	15	21.6	28.5	0.21
POS 18	18	M18 × 2.5	23	16.5	44	44	72	94	31.75	0.3	21.9	15	26.0	42.5	0.28
POS 18 MF	18	M18 × 1.5	23	16.5	44	44	72	94	31.75	0.3	21.9	15	26.0	42.5	0.28
POS 20	20	M20 × 2.5	25	18	47	50	78	103	34.925	0.3	24.4	14	31.5	52.5	0.38
POS 20 MF	20	M20 × 1.5	25	18	47	50	78	103	34.925	0.3	24.4	14	31.5	52.5	0.38
POS 22 MF	22	M22 × 1.5	28	20	51	54	84	111	38.10	0.3	25.8	15	38.0	57.0	0.48
POS 25 MF	25	M24 × 2.0	31	22	57	60	94	124	42.85	0.3	29.6	15	47.5	68.0	0.64
POS 28 MF	28	M27 × 2.0	35	24	62	66	103	136	47.60	0.3	32.3	15	58.0	75.5	0.96
POS 30 MF	30	M30 × 2.0	37	25	66	70	110	145	50.80	0.3	34.8	17	64.0	88.0	1.10

Material and surface treatments:

- Body: medium carbon steel zinc plating; Steel ball: bearing steel without chromium plating; Inner ring: brass H62.
- Outer race is lined with brass liner.

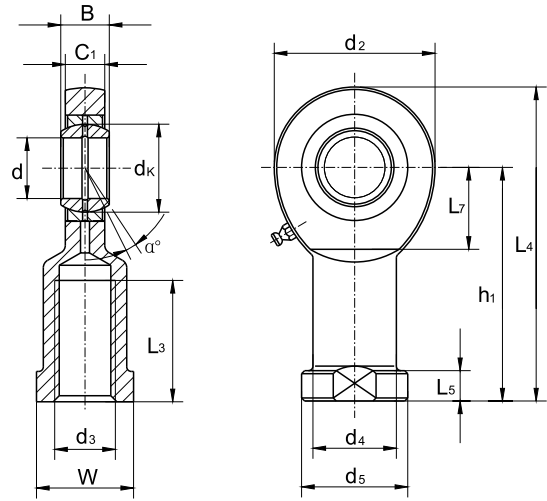
- Rod body with a lubricating hole or grease nipple.
- For left-hand thread, please add suffix "L", e.g. POSL 8.
- For fine-pitch thread, please add suffix "MF", e.g. POS 8MF.
- General with forging part, also turn part is optional.

Rod Ends - SI-E(S), SI-ES 2RS



MAINTENANCE REQUIRED

AVAILABLE ► ZINC PLATED



Part No.	Dimensions (mm)													Load ratings (KN)		Weight (kg)	
	d	d ₃ 6H	B	C ₁	L ₃ min	W	d ₂	h ₁	L ₄	L ₅	d ₄	d ₅	d _k	α	dyn. C		stat. C ₀
SI 6 E*	6	M6 × 1.0	6	4.4	11	11	21	30	40.5	5	10	13	10	13	3.40	8.15	0.021
SI 8 E*	8	M8 × 1.25	8	6.0	15	14	24	36	48	5	12.5	16	13	15	5.50	12.9	0.039
SI 10 E*	10	M10 × 1.5	9	7.0	20	17	29	43	57.5	6.5	15	19	16	12	8.15	17.6	0.061
SI 12 E*	12	M12 × 1.75	10	8.0	23	19	34	50	67	6.5	17.5	22	18	11	10.8	24.5	0.096
SI 15 ES	15	M14 × 2.0	12	10	30	22	40	61	81	8	21	26	22	8	17.0	36.0	0.180
SI 17 ES	17	M16 × 2.0	14	11	34	27	46	67	90	10	24	30	25	10	21.2	45.0	0.220
SI 20 ES	20	M20 × 1.5	16	13	40	32	53	77	103.5	10	27.5	35	29	9	30.0	60.0	0.350
SI 25 ES	25	M24 × 2.0	20	17	48	36	64	94	126	12	33.5	42	35.5	7	48.0	83.0	0.640
SI 30 ES	30	M30 × 2.0	22	19	56	41	73	110	146.5	15	40	50	40.7	6	62.0	110	0.930
SI 35 ES	35	M36 × 3.0	25	21	60	50	82	125	166	15	47	58	47	6	80.0	146	1.30
SI 40 ES	40	M39 × 3.0	28	23	65	55	92	142	188	18	52	65	53	7	100	180	2.00
SI 45 ES	45	M42 × 3.0	32	27	65	60	102	145	196	20	58	70	60	7	127	240	2.50
SI 50 ES	50	M45 × 3.0	35	30	68	65	112	160	216	20	62	75	66	6	156	290	3.50
SI 60 ES	60	M52 × 3.0	44	38	70	75	135	175	242.5	20	70	88	80	6	245	450	5.50
SI 70 ES	70	M56 × 4.0	49	42	80	85	160	200	280	20	80	98	92	6	315	610	8.60
SI 80 ES	80	M64 × 4.0	55	47	85	100	180	230	320	25	95	110	105	6	400	750	12.0

Rod Ends

- It is made up of a radial spherical plain bearing GE..E(S) or GE..ES 2RS and rod body.
 - Rod body of SI..ES with a lubricating hole or a grease nipple.
 - For bearings d >=15, SI..ES 2RS also available , e.g. SI 20 ES 2RS.
 - Lubricating hole or grease nipple isn't available for the sizes marked "*".
 - For left-hand thread, please add suffix "L", e.g. SIL 20ES.
 - All with forging part.
- Specials on request (only volumes).

- Body: medium carbon steel zinc plating; Inner ring and steel ball: both bearing steel.

Rod Ends - SA-E(S), SA-ES 2RS

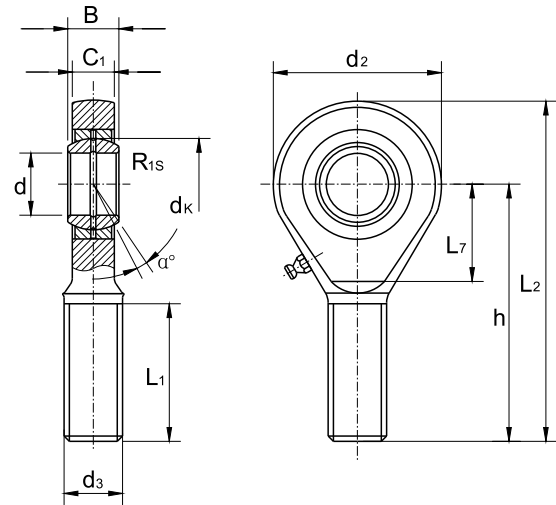


MAINTENANCE REQUIRED

AVAILABLE ► ZINC PLATED

SS 304

SS 316



Part No.	Dimensions (mm)											Load ratings (KN)		Weight (kg)	
	d	d3 eg	B	C ₁	L ₁ min	d ₂	L ₇ min	h	L ₂	d _k	R _{1s}	α ≈	dyn. C		stat. C ₀
SA 6 E*	6	M6 × 1.0	6	4.4	18	21	11	36	46.5	10	0.3	13	3.40	8.15	0.017
SA 8 E*	8	M8 × 1.25	8	6	22	24	14	42	54	13	0.3	15	5.50	12.9	0.029
SA 10 E*	10	M10 × 1.5	9	7	26	29	15	48	62.5	16	0.3	12	8.15	17.6	0.051
SA 12 E*	12	M12 × 1.75	10	8	28	34	17	54	71	18	0.3	11	10.8	24.5	0.086
SA 15 ES	15	M14 × 2.0	12	10	34	40	20	63	83	22	0.3	8	17.0	36.0	0.140
SA 17 ES	17	M16 × 2.0	14	11	36	46	23	69	92	25	0.3	10	21.2	45.0	0.190
SA 20 ES	20	M20 × 1.5	16	13	43	53	27	78	104.5	29	0.6	9	30.0	60.0	0.310
SA 25 ES	25	M24 × 2.0	20	17	53	64	32	94	126	35.5	0.6	7	48.0	83.0	0.560
SA 30 ES	30	M30 × 2.0	22	19	65	73	37	110	146.5	40.7	0.6	6	62.0	110	0.890
SA 35 ES	35	M36 × 3.0	25	21	82	82	41	140	181	47	0.6	6	80.0	146	1.40
SA 40 ES	40	M39 × 3.0	28	23	86	92	46	150	196	53	0.6	7	100	180	1.80
SA 45 ES	45	M42 × 3.0	32	27	94	102	51	163	214	60	0.6	7	127	240	2.60
SA 50 ES	50	M45 × 3.0	35	30	107	112	56	185	241	66	0.6	6	156	290	3.40
SA 60 ES	60	M52 × 3.0	44	38	115	135	68	210	277.5	80	1.0	6	245	450	5.90
SA 70 ES	70	M56 × 4.0	49	42	125	160	80	235	315	92	1.0	6	315	610	8.20
SA 80 ES	80	M64 × 4.0	55	47	140	180	90	270	360	105	1.0	6	400	750	12.0

- It is made up of a radial spherical plain bearing GE..E(S) or GE..ES 2RS and rod body.
 - Rod body of 51..ES with a lubricating hole or a grease nipple.
 - For bearings $d \geq 15$, SI..ES 2RS also available, e.g. SA 20 ES 2RS.
 - Lubricating hole or grease nipple isn't available for the sizes marked "***".
 - For left-hand thread, please add suffix "L", e.g. SAL 20ES.
 - All with forging part.
- Specials on request (only volumes).

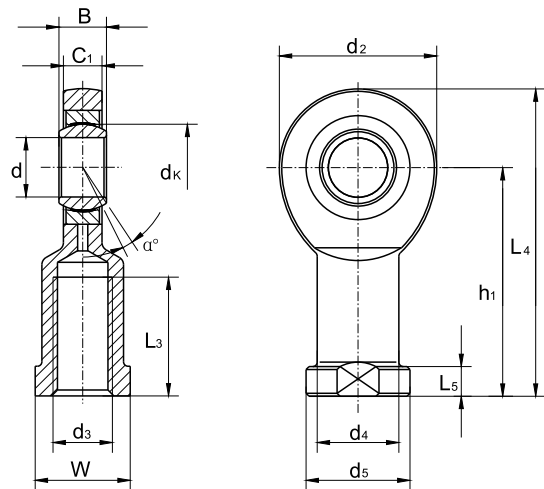
- Body: medium carbon steel zinc plating; Inner ring and steel ball: both bearing steel.

Rod Ends - GIR..UK, GIR..UK 2RS



MAINTENANCE-FREE

AVAILABLE ► ZINC PLATED



Part No.	Dimensions (mm)														Load ratings (KN)		Weight (kg)
	d	d ₃ 6H	B	C ₁	d ₂	L ₃ min	W	d ₄	d ₅	L ₅	h ₁	L ₄	d _k	α	dyn. C	stat. C ₀	
GIR 6 UK	6	M6 × 1.0	6	4.4	21	11	11	10	13	5	30	40.5	10	13	3.60	8.15	0.021
GIR 8 UK	8	M8 × 1.25	8	6	24	15	14	12.5	16	5	36	48	13	15	5.85	12.9	0.039
GIR 10 UK	10	M10 × 1.5	9	7	29	20	17	15	19	6.5	43	57.5	16	12	8.65	17.6	0.061
GIR 12 UK	12	M12 × 1.75	10	8	34	23	19	17.5	22	6.5	50	67	18	11	11.4	24.5	0.096
GIR 15 UK	15	M14 × 2.0	12	10	40	30	22	21	26	8	61	81	22	8	17.6	36.0	0.18
GIR 17 UK (2RS)	17	M16 × 2.0	14	11	46	34	27	24	30	10	67	90	25	10	22.4	45.0	0.22
GIR 20 UK (2RS)	20	M20 × 1.5	16	13	53	40	32	27.5	35	10	77	103.5	29	9	31.5	60.0	0.35
GIR 25 UK (2RS)	25	M24 × 2.0	20	17	64	48	36	33.5	42	12	94	126	35.5	7	51.0	83.0	0.64
GIR 30 UK (2RS)	30	M30 × 2.0	22	19	73	56	41	40	50	15	110	146.5	40.7	6	66.5	110	0.93
GIR 35 UK 2RS	35	M36 × 3.0	25	21	82	60	50	47	58	15	125	166	47	6	112	146	1.30
GIR 40 UK 2RS	40	M39 × 3.0	28	23	92	65	55	52	65	18	142	188	53	7	140	180	2.00
GIR 45 UK 2RS	45	M42 × 3.0	32	27	102	65	60	58	70	20	145	196	60	7	180	240	2.50
GIR 50 UK 2RS	50	M45 × 3.0	35	30	112	68	65	62	75	20	160	216	66	6	220	290	3.50
GIR 60 UK 2RS	60	M52 × 3.0	44	38	135	70	75	70	88	20	175	242.5	80	6	345	450	5.50
GIR 70 UK 2RS	70	M56 × 4.0	49	42	160	80	85	80	98	20	200	280	92	6	440	610	8.60
GIR 80 UK 2RS	80	M64 × 4.0	55	47	180	85	100	95	110	25	230	320	105	6	570	750	12.0

- It is made up of a maintenance-free radial spherical plain bearing GE..UK or GE..UK 2RS and rod body.
 - For bearings $d \geq 17$, GIR..UK 2RS also available, e.g. GIR 20 UK 2RS.
 - For left-hand thread, please add suffix "L", e.g. GIRL 20UK.
 - All with forging part.
- Specials on request (only volumes).

- Body: medium carbon steel zinc plating; Inner ring: low carbon steel
- Steel ball: bearing steel.

Rod Ends - GAR..UK, GAR..UK 2RS

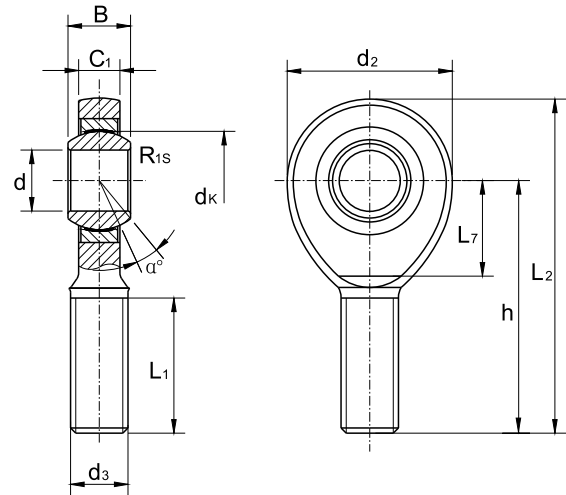


MAINTENANCE-FREE

AVAILABLE ► ZINC PLATED

SS 304

SS 316



Part No.	Dimensions (mm)												Load ratings (KN)		Weight (kg)
	d	d3 6g	B	C ₁	d ₂	L ₂	h	L ₇	L ₁ min	d _k	R _{1s}	α	dyn. C	stat. C ₀	
GAR 6 UK	6	M6 × 1.0	6	4.4	21	46.5	36	12	18	10	0.3	13	3.60	8.15	0.017
GAR 8 UK	8	M8 × 1.25	8	6	24	54	42	14	22	13	0.3	15	5.85	12.9	0.029
GAR 10 UK	10	M10 × 1.5	9	7	29	62.5	48	15	26	16	0.3	12	8.65	17.6	0.051
GAR 12 UK	12	M12 × 1.75	10	8	34	71	54	18	28	18	0.3	11	11.4	24.5	0.086
GAR 15 UK	15	M14 × 2.0	12	10	40	83	63	20	34	22	0.3	8	17.6	36.0	0.14
GAR 17 UK (2RS)	17	M16 × 2.0	14	11	46	92	69	23	36	25	0.3	10	22.4	45.0	0.19
GAR 20 UK (2RS)	20	M20 × 1.5	16	13	53	104.5	78	27	43	29	0.6	9	31.5	60.0	0.31
GAR 25 UK (2RS)	25	M24 × 2.0	20	17	64	126	94	32	53	35.5	0.6	7	51.0	83.0	0.56
GAR 30 UK (2RS)	30	M30 × 2.0	22	19	73	146.5	110	37	65	40.7	0.6	6	66.5	110	0.89
GAR 35 UK 2RS	35	M36 × 3.0	25	21	82	181	140	42	82	47	0.6	6	112	146	1.40
GAR 40 UK 2RS	40	M39 × 3.0	28	23	92	196	150	48	86	53	0.6	7	140	180	1.80
GAR 45 UK 2RS	45	M42 × 3.0	32	27	102	214	163	52	94	60	0.6	7	180	240	2.60
GAR 50 UK 2RS	50	M45 × 3.0	35	30	112	241	185	60	107	66	0.6	6	220	290	3.40
GAR 60 UK 2RS	60	M52 × 3.0	44	38	135	277.5	210	75	115	80	1.0	6	345	450	5.90
GAR 70 UK 2RS	70	M56 × 4.0	49	42	160	315	235	87	125	92	1.0	6	440	610	8.20
GAR 80 UK 2RS	80	M64 × 4.0	55	47	180	360	270	100	140	105	1.0	6	570	750	12.0

- It is made up of a maintenance-free radial spherical plain bearing GE..UK or GE..UK 2RS and rod body.
 - For bearings $d \geq 17$, GIR..UK 2RS also available, e.g. GAR 20 UK 2RS.
 - For left-hand thread, please add suffix "L", e.g. GARL 20UK.
 - All with forging part.
- Specials on request (only volumes).

- Body: medium carbon steel zinc plating; Inner ring: low carbon steel
- Steel ball: bearing steel.

Rod Ends - SI-N



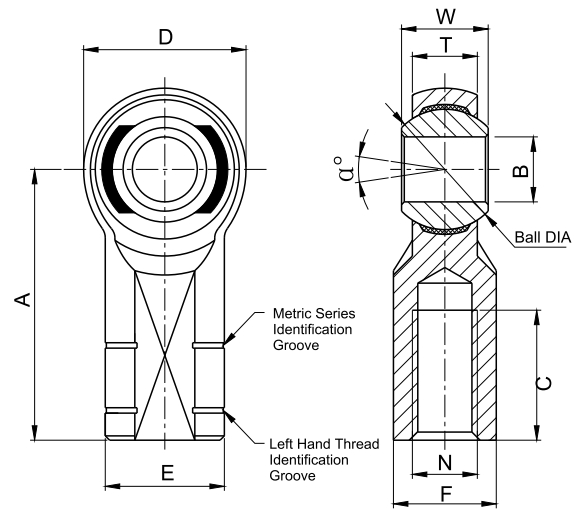
HIGH LOADED INJECTION

AVAILABLE ▶

35CrMo

SS 304

SS 316



Part No.	Dimensions (mm)											Weight (kg)
	N	A	D	E	C	F	T	W	B	α°	Ball DIA	
	Thread 6H	± 0.4	± 0.25	± 0.25	$+1.50$ -0.75	$+0.05$ -0.25	$+0.002$ -0.010	± 0.012	$+0.065$ -0.012	Misalign Angle	REF	Kg≈
SI-N5	M5 × 0.8	27.00	16.00	11.00	14.00	9.00	6.25	8.00	5.00	14°	11.10	0.019
SI-N6	M6 × 1.0	30.00	19.00	13.00	14.00	11.00	7.00	9.00	6.00	13°	12.70	0.029
SI-N8	M8 × 1.25	36.00	22.25	16.00	17.00	14.00	8.75	12.00	8.00	18°	15.88	0.051
SI-N10	M10 × 1.5	43.00	27.00	19.00	21.00	17.00	10.50	14.00	10.00	17°	19.05	0.086
SI-N12	M12 × 1.75	50.00	30.00	22.00	24.00	19.00	12.00	16.00	12.00	17°	22.23	0.124
SI-N14	M14 × 2.0	57.00	34.75	25.00	27.00	22.00	13.50	19.00	14.00	21°	25.40	0.184
SI-N16	M16 × 2.0	64.00	38.00	27.00	33.00	22.00	14.25	21.00	16.00	23°	28.58	0.223
SI-N20	M20 × 1.5	77.00	46.00	34.00	40.00	30.00	18.00	25.00	20.00	20°	34.93	0.436

Material and surface treatments:

- Body: alloy steel 35CrMo with heat treating. Alternative stainless steel 304 or 316.
- Steel ball: bearing steel with hard chrome plating. Alternative stainless steel.
- Race: nylon.

- For left-hand thread, please add suffix "L", e.g. SI-NL 8.
Specials on request (only volumes).

Rod Ends - SA-N



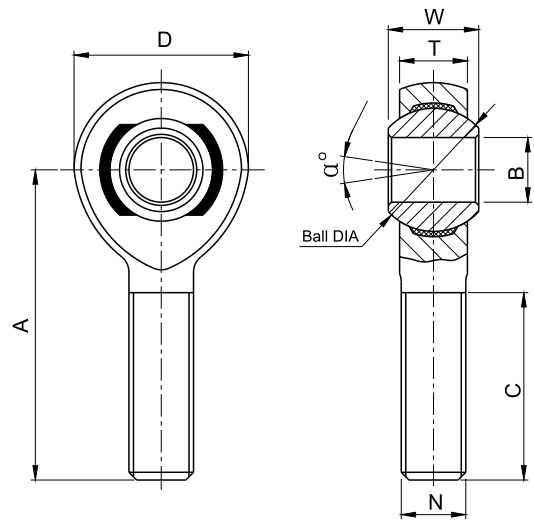
HIGH LOADED INJECTION

AVAILABLE ▶

35CrMo

SS 304

SS 316



Part No.	Dimensions (mm)									Weight (kg)
	N	A	D	C	T	W	B	α°	Ball DIA	
	Thread 6g	±0.4	±0.25	+1.50 -0.75	±0.12	±0.12	+0.065 -0.012	Misalign Angle	REF	Kg≈
SA-N5	M5 × 0.8	33.00	16.00	20.00	6.25	8.00	5.00	14°	11.10	0.012
SA-N6	M6 × 1.0	36.00	19.00	22.00	7.00	9.00	6.00	13°	12.70	0.019
SA-N8	M8 × 1.25	42.00	22.25	25.00	8.75	12.00	8.00	18°	15.88	0.034
SA-N10	M10 × 1.5	48.00	27.00	29.00	10.50	14.00	10.00	17°	19.05	0.058
SA-N12	M12 × 1.75	54.00	30.00	33.00	12.00	16.00	12.00	17°	22.23	0.083
SA-N14	M14 × 2.0	60.00	34.75	36.00	13.50	19.00	14.00	21°	25.40	0.127
SA-N16	M16 × 2.0	66.00	38.00	40.00	14.25	21.00	16.00	23°	28.58	0.170
SA-N20	M20 × 1.5	78.00	46.00	47.00	18.00	25.00	20.00	20°	34.93	0.318

Material and surface treatments:

- Body: alloy steel 35CrMo with heat treating. Alternative stainless steel 304 or 316.
- Steel ball: bearing steel with hard chrome plating. Alternative stainless steel.
- Race: nylon.

- For left-hand thread, please add suffix "L", e.g. SA-NL 8.
Specials on request (only volumes).



Authorized distributor

2020-02 Product-, image- and data changes reserved.



www.bonnekamp.eu.com